





## Stunning Refurbished Three-Bedroom Mid-Terrace Villa in Summerston, Glasgow

Nestled in a quiet residential setting, this beautifully refurbished three-bedroom mid-terrace villa offers modern living in the heart of Summerston. Boasting well-proportioned accommodation, this home is perfect for families and professionals alike.

MQ Assisted Move, Part Exchange and 95% mortgages are available.

Upon entering, you are welcomed by a bright reception hallway, complete with a cloakroom/WC for added convenience. The spacious principal lounge features a large window, flooding the space with natural light, complemented by stylish wood-effect flooring. The newly fitted dining kitchen is a standout feature, offering contemporary cabinetry, an integrated oven, and ample space for both a washing machine and an American-style fridge freezer-ideal for modern living.

A staircase leads to the upper level, where you'll find three well-sized double bedrooms, a storage cupboard, and a luxurious four-piece bathroom. This fully tiled bathroom is designed with elegance in mind, featuring a walk-in drench shower, a sleek bathtub, and spotlight lighting for a sophisticated touch.

Additional highlights of this fantastic property include double glazing and front and rear gardens, providing outdoor space for relaxation or entertaining.



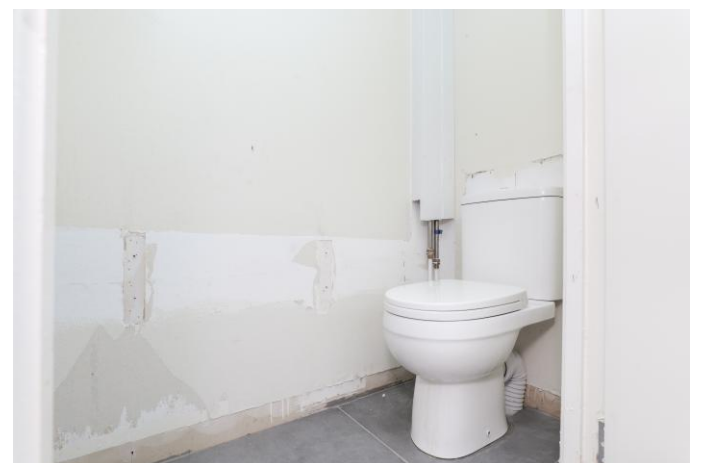
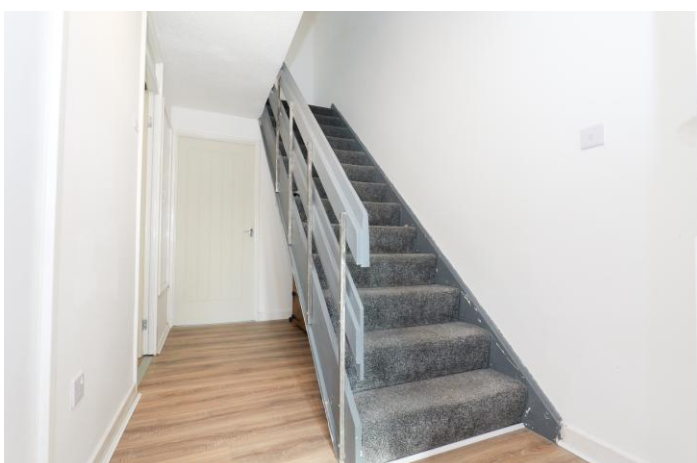
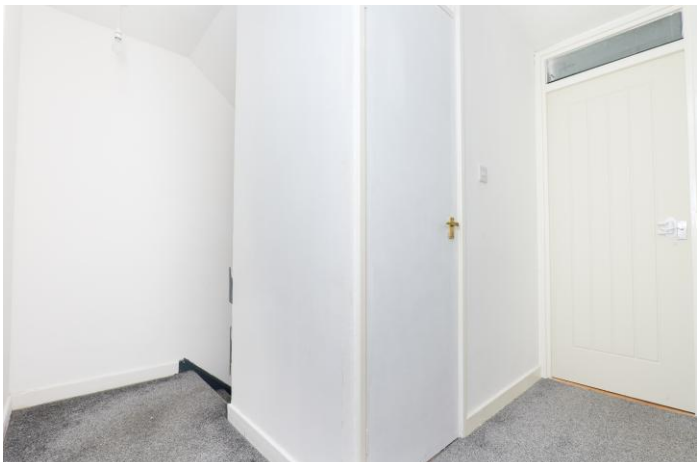
Located within easy reach of local amenities in Summerston, the property also benefits from nearby shopping, dining, and entertainment options on Maryhill Road, Byres Road, Anniesland Cross, and Great Western Road. Excellent public transport links-including bus, rail, and underground-ensure convenient travel across the city, while nearby access to the Clydeside Expressway, Clyde Tunnel, and M8 motorway network makes commuting effortless.

Early viewing is highly recommended to secure this exceptional home!

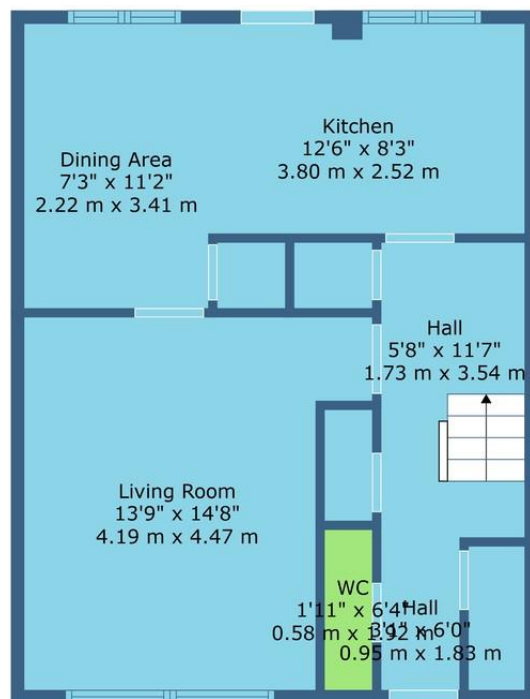
MQ Estate Agents are open 7 days a week:  
Monday to Friday 8am to 8:30pm & Saturday & Sunday 8.30am - 8pm to arrange your viewing or valuation appointment.



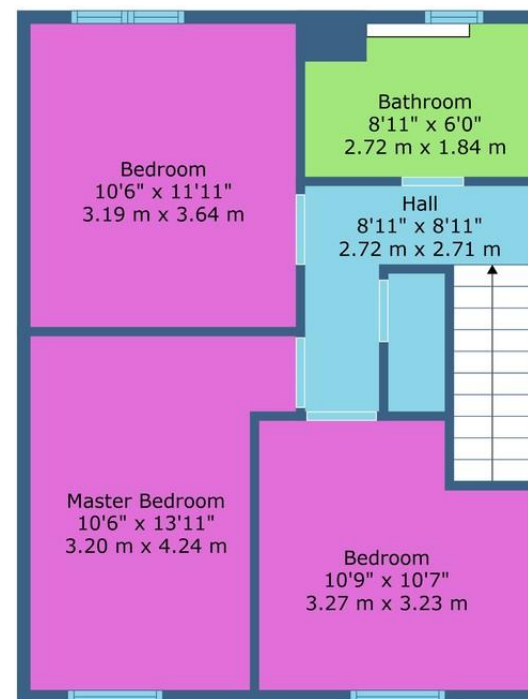








Floor 1



Floor 2

**TOTAL: 1024 sq. ft, 95 m<sup>2</sup>**  
 FLOOR 1: 506 sq. ft, 47 m<sup>2</sup>, FLOOR 2: 518 sq. ft, 48 m<sup>2</sup>  
 EXCLUDED AREAS: WC: 12 sq. ft, 1 m<sup>2</sup>

