



43 CONEY DRIVE

ML1 1AN

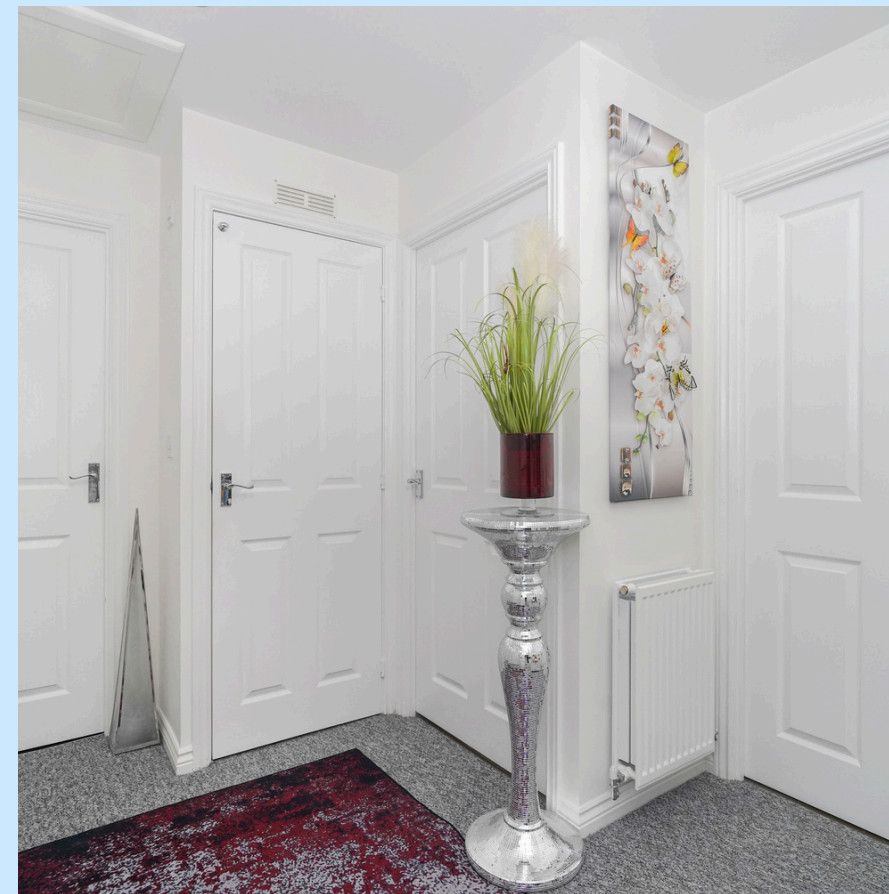


Welcome to 43 Coney Drive, Ravenscraig, Motherwell, ML1 1AN – A Stunning 4-Bedroom Detached Family Home.

Nestled in the heart of the sought-after Ravenscraig development, this impressive 4-bedroom detached home offers modern living in a thriving community. Perfect for families, this property boasts a blend of style, space, and functionality that's sure to impress.



The spacious living room, positioned at the front of the property, offers an abundance of natural light and serves as the perfect spot for relaxing or entertaining guests. At the heart of the home lies the modern kitchen, thoughtfully designed with ample worktop and storage space. Open-plan to the family room, this area is ideal for family life, with patio doors that lead directly to the private rear garden.



A convenient WC and a handy under-stair storage cupboard complete the ground floor, offering practicality and ease.

The central hall connects all the upstairs rooms and adds to the sense of flow throughout the home.



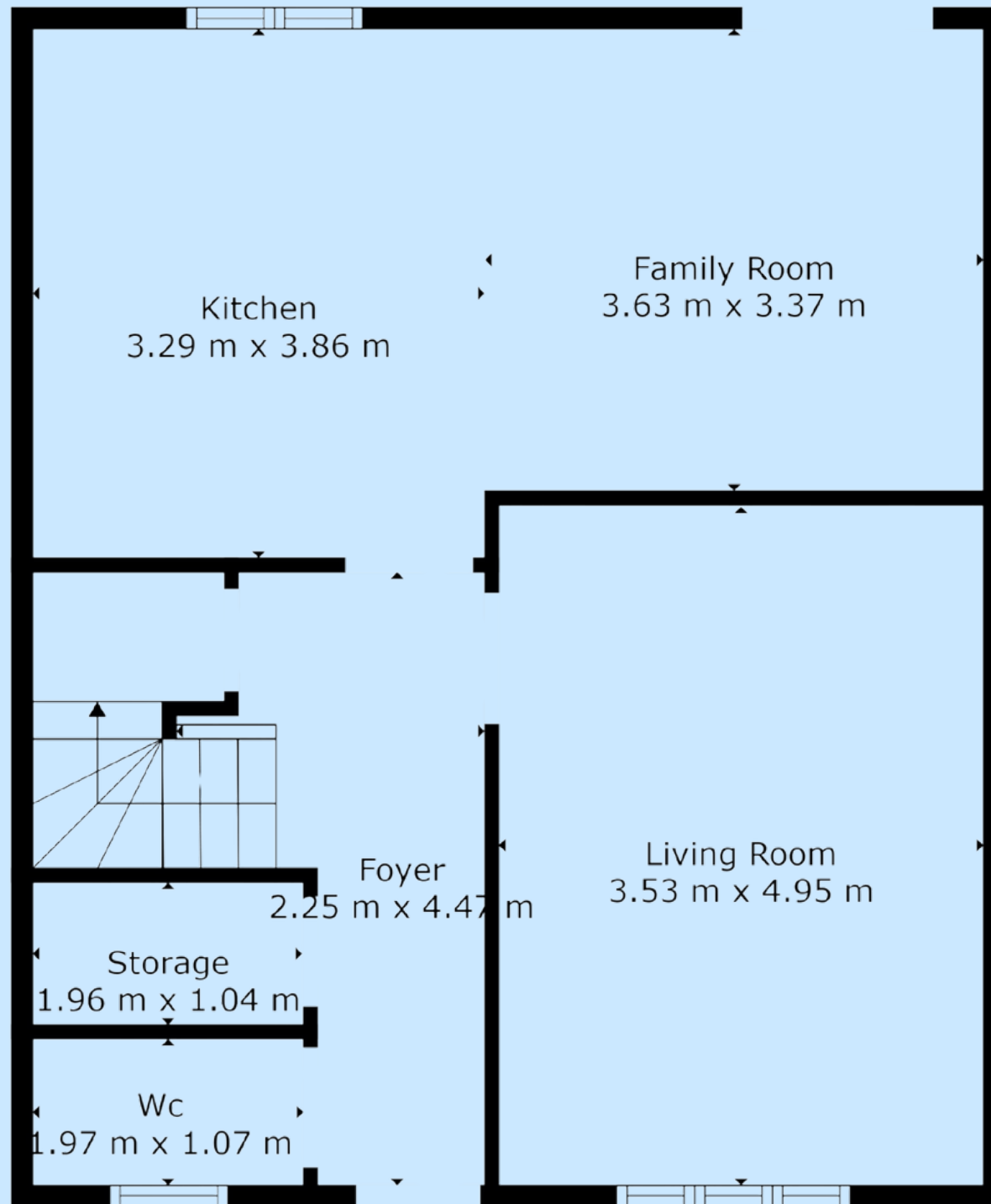
Upstairs, the property features four well-proportioned bedrooms, providing flexibility for a growing family. The primary bedroom offers a stunning ensuite, this additional shower room ensures there's no rush during busy mornings. A peaceful retreat with plenty of space for furniture and storage.



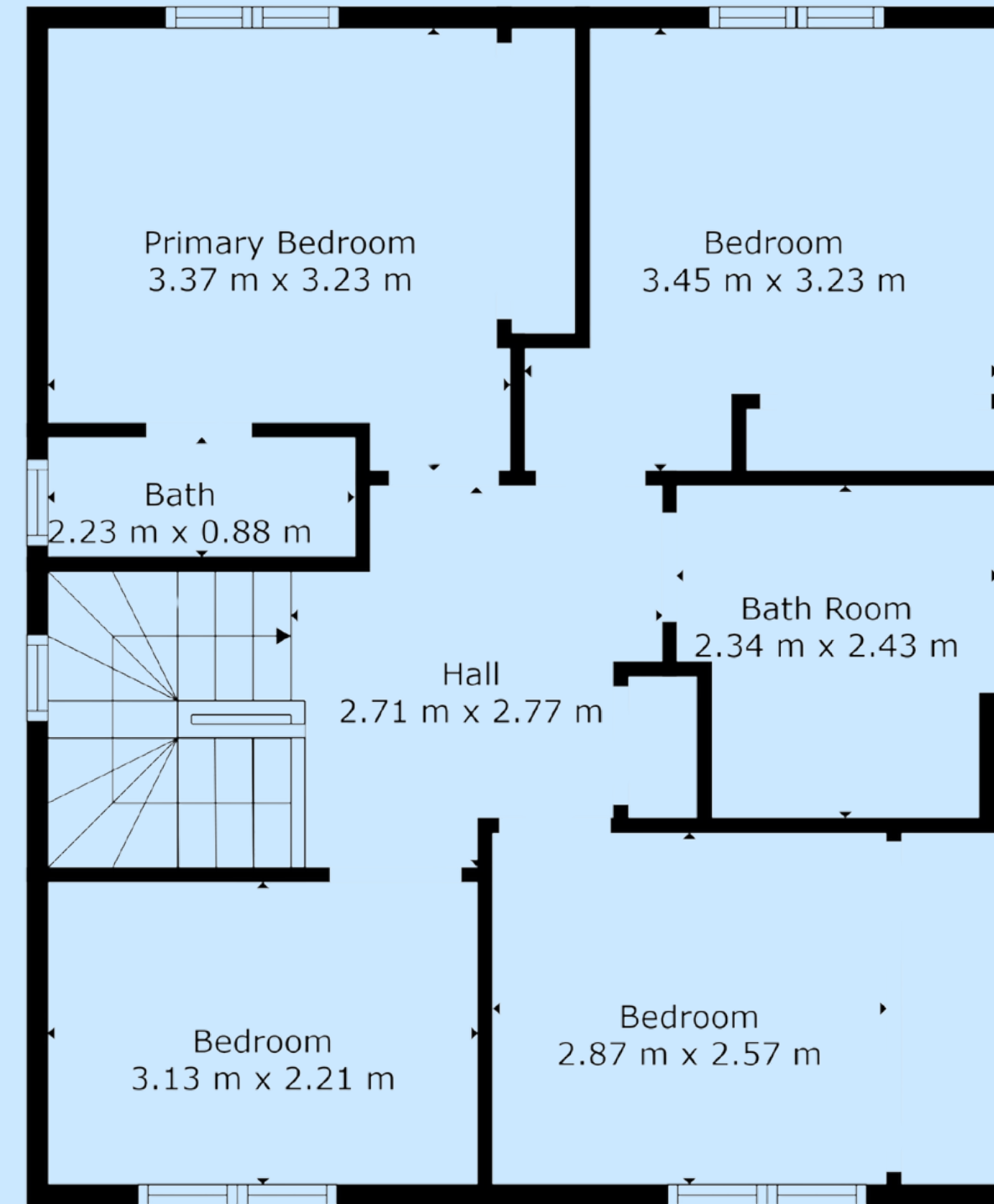
The second bedroom is a bright and spacious double, ideal for guests or older children. Two additional bedrooms provide options for a home office, nursery, or additional sleeping quarters.



A spacious slabbed area provides an ideal spot for outdoor seating, dining, or entertaining, while the raised decking area adds a touch of elegance and versatility for relaxation or hosting guests. The garden is bordered with attractive stone detailing, adding character and enhancing the overall aesthetic. Additionally, a large garden shed offers ample storage for tools, equipment, or hobbies, making this outdoor space as functional as it is inviting. Perfect for enjoying the outdoors all year round.



Floor 1



Floor 2

TOTAL: 115 m2
BELOW GROUND: 56 m2, FLOOR 2: 59 m2
EXCLUDED AREAS: STORAGE: 2 m2

