





Welcome to this delightful semi-detached cottage in Ayr, a perfect blend of traditional charm and modern convenience, yet with exciting potential for further modernisation. Situated across from the Belleisle local golf course and just a stone's throw from the beach, this property offers an idyllic lifestyle in a prime location.

Ground Floor:

Entrance Hallway: Step through the inviting entrance hallway, setting the tone for the warmth and character found throughout the home.

Lounge: The cosy lounge features elegant French doors that open onto a sunny patio, ideal for indoor-outdoor living and entertaining.

Dining Kitchen: The spacious dining kitchen is a chef's dream, providing ample space for family meals and gatherings.

Upper Floor:

Bedrooms: Three well-proportioned bedrooms offer comfort and privacy, perfect for family living or hosting guests. The master bedroom is generously sized with ample space for a seating area.

Bathroom: A stylish three piece bathroom with bath with overhead shower, WC and wash hand basin.

Grand Entrance: Enjoy the serenity of the tree-covered entranceway, providing a sense of seclusion and peace.



Location: This home is enviably positioned across from a local golf course and close to beautiful beaches, offering endless recreational opportunities.

Potential:

While already offering a comfortable and charming living space, this cottage would benefit from some modernisation, allowing you to put your own stamp on it and potentially increase its value.

This charming cottage combines a superb location with comfortable living spaces and the potential for enhancement, making it the perfect home for those seeking a tranquil yet convenient lifestyle. Don't miss the chance to make this enchanting property your own and add your personal touch!

LOUNGE

17' 6" x 12' 11" (5.35m x 3.96m)

DINING KITCHEN

24' 0" x 9' 9" (7.33m x 2.99m)

MASTER BEDROOM

20' 0" x 12' 11" (6.12m x 3.94m)

BEDROOM TWO

15' 1" x 8' 2" (4.61m x 2.49m)

BEDROOM THREE

10' 2" x 8' 5" (3.10m x 2.57m)

BATHROOM

10' 11" x 4' 10" (3.34m x 1.48m)

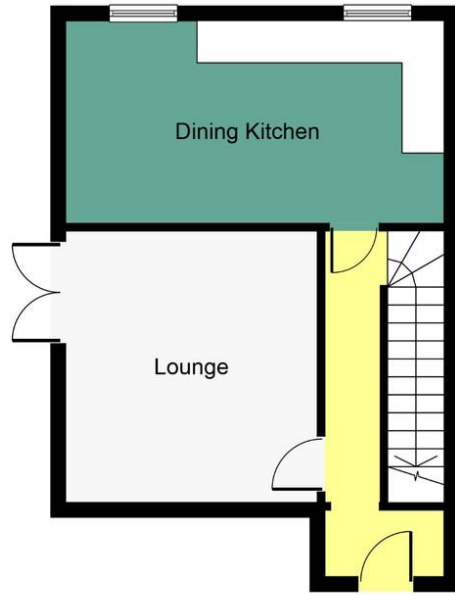




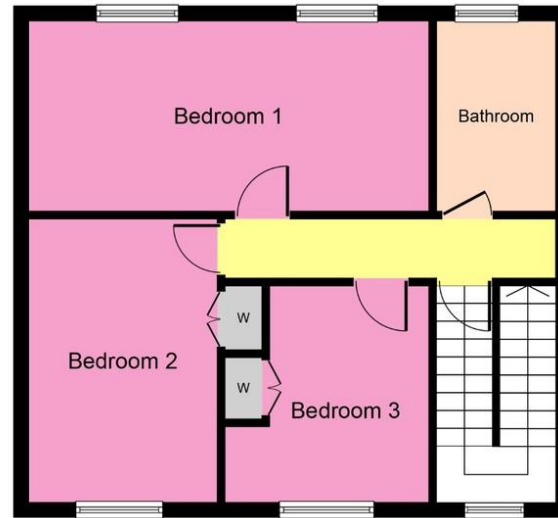




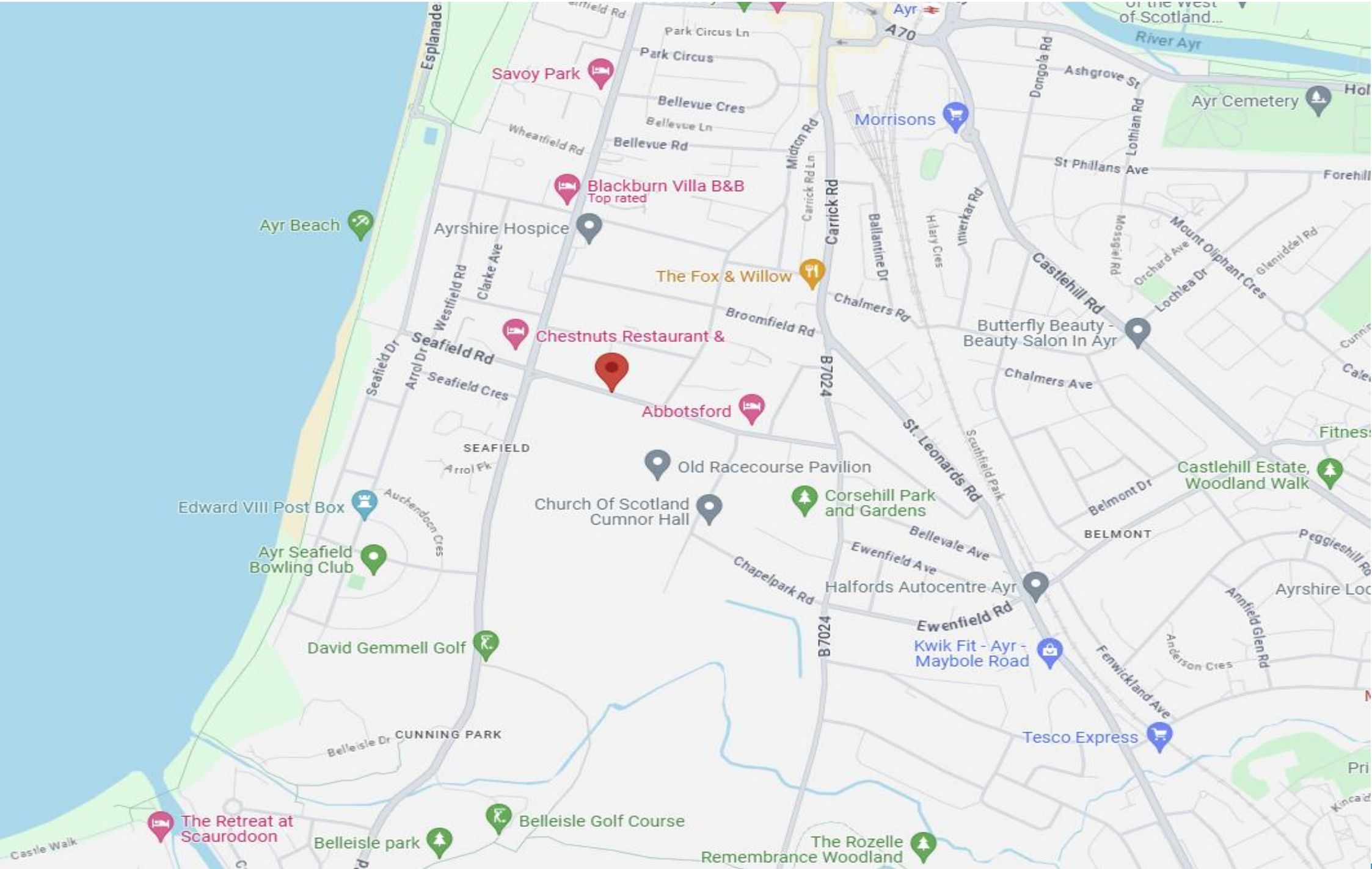




Ground Floor



First Floor



Call free on 0800 074 8585

www.mqestateagents.co.uk

We are registered with the Office of Fair Trading and the Property Ombudsman. You can be confident that the service is not only regulated but also fully transparent.

Whilst every precaution to ensure accuracy has been taken during the preparation of these particulars, if there is any aspect which is critical to your interest or which you find misleading, please contact us for further information. In accordance with the terms of the Property Misdescriptions Act, we wish to clarify all kitchen appliances or indeed and other mechanical items, apparatus or appliances relating to this property, including the central heating system, has not been inspected or tested and therefore MQ Estate Agents Limited do not warrant either now or at a later date their correct functions. Please note photographs taken with a wide angled lens and all measurements are approximate and are taken with a laser tape measure, therefore MQ Estate Agents Limited cannot guarantee true room sizes and will not be held responsible.