



## Warwick Gardens, W14

£1,269 Per week

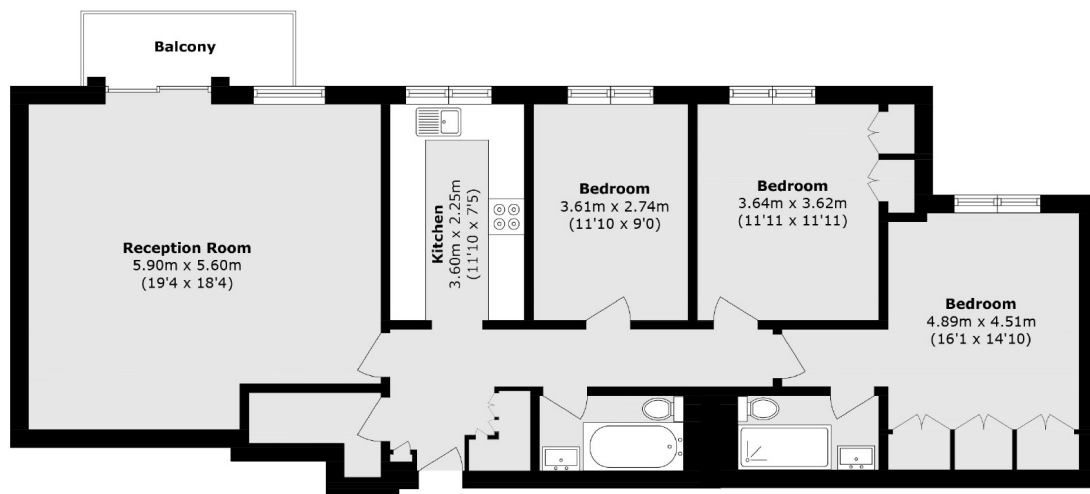
A recently refurbished three double bedroom apartment on the seventh floor of a private portered block. The building has lift access and the property has wooden flooring throughout and a fully equipped separate kitchen.

Ideally located with close proximity to all the shops, bars and restaurants of High Street Kensington, including High street Kensington tube station. Holland Park is only 0.2 miles away and Earls Court Station is a short walk.

### Features

- Three Double Bedrooms
- Portered Development
- Two Bathrooms
- Separate Kitchen
- Seventh Floor
- Lift Access

# Warwick Gardens, London, W14



Total area (approx.): 98.4 sq. m (1059.1 sq. ft)

Balcony area (approx.): 4.2sq. m (45.2 sq. ft)

## Dexters

Kensington  
1 Campden Hill Road  
London  
W8 7DU  
Lettings  
020 7067 2434

Energy Rating: . We aim to make our particulars both accurate and reliable. However they are not guaranteed; nor do they form part of an offer or contract. If you require clarification on any points then please contact us, especially if you're traveling some distance to view. Please note that appliances and heating systems have not been tested and therefore no warranties can be given as to their good working order.

 **RICS** | Regulated  
Estate Agent  
and Letting Agent

[dexters.co.uk](https://www.dexters.co.uk)