



Palace Gardens Terrace, W8

£1,326 Per week

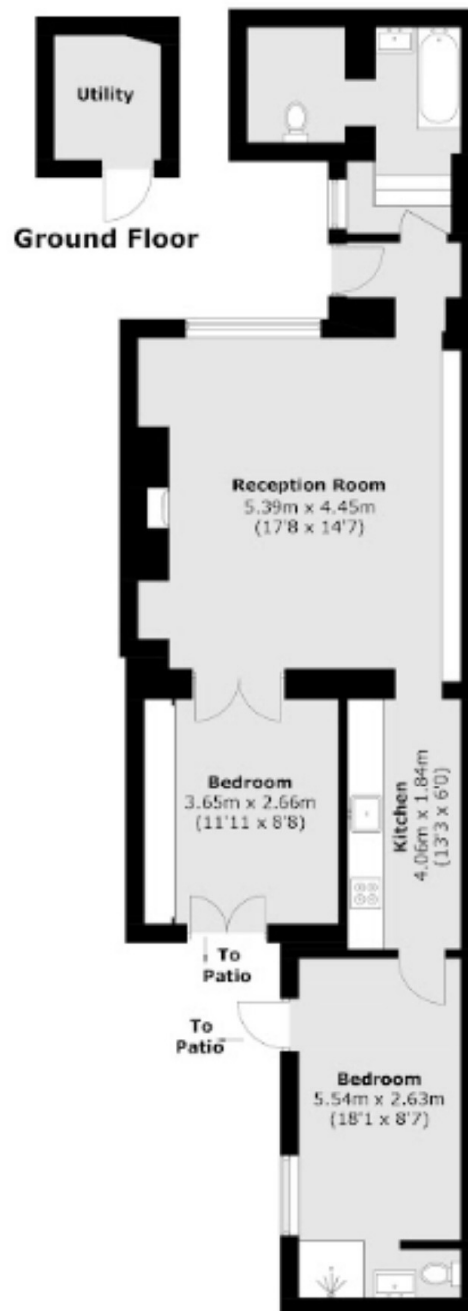
This beautifully refurbished two-bedroom apartment is situated on the lower ground floor of a distinguished period building on one of Kensington's most prestigious streets. Offering a perfect blend of privacy and luxury, the property features high-end finishes throughout, including marble bathrooms, top-of-the-line appliances, electric blinds, and a remote-controlled fireplace. A generous rear terrace provides an ideal space for outdoor relaxation and entertaining.

Located in the heart of the Royal Borough between Notting Hill and Kensington High Street which offers a fantastic range of restaurants and bars.

Features

- Two Double Bedrooms
- Two Bathrooms
- Furnished
- Smart Home
- Fitted Storage
- Terrace

Palace Gardens Terrace, London, W8



Total area (approx.): 78.0 sq. m (839.5 sq. ft)
Outbuilding area (approx.): 3.5 sq. m (37.6 sq. ft)

Dexters

Kensington
1 Campden Hill Road
London
W8 7DU
Lettings
020 7067 2434

Energy Rating: C. We aim to make our particulars both accurate and reliable. However they are not guaranteed; nor do they form part of an offer or contract. If you require clarification on any points then please contact us, especially if you're traveling some distance to view. Please note that appliances and heating systems have not been tested and therefore no warranties can be given as to their good working order.

 **RICS** | Regulated
Estate Agent
and Letting Agent

[dexters.co.uk](https://www.dexters.co.uk)