



Hyde Park Gate, SW7

£1,269 Per week

Dexters



Hyde Park Gate, SW7

A spacious and well-presented three-bedroom, two-bathroom apartment is available for rent. The property features a large eat-in kitchen, a balcony, three equally-sized rooms, and a porter in the building.

Situated just across from the entrance to Hyde Park, this stunning building is located 0.6 miles from both High Street Kensington and Gloucester Road stations. The property is also conveniently positioned around the corner from Queen's Gate, with its numerous coffee shops and restaurants.

Features

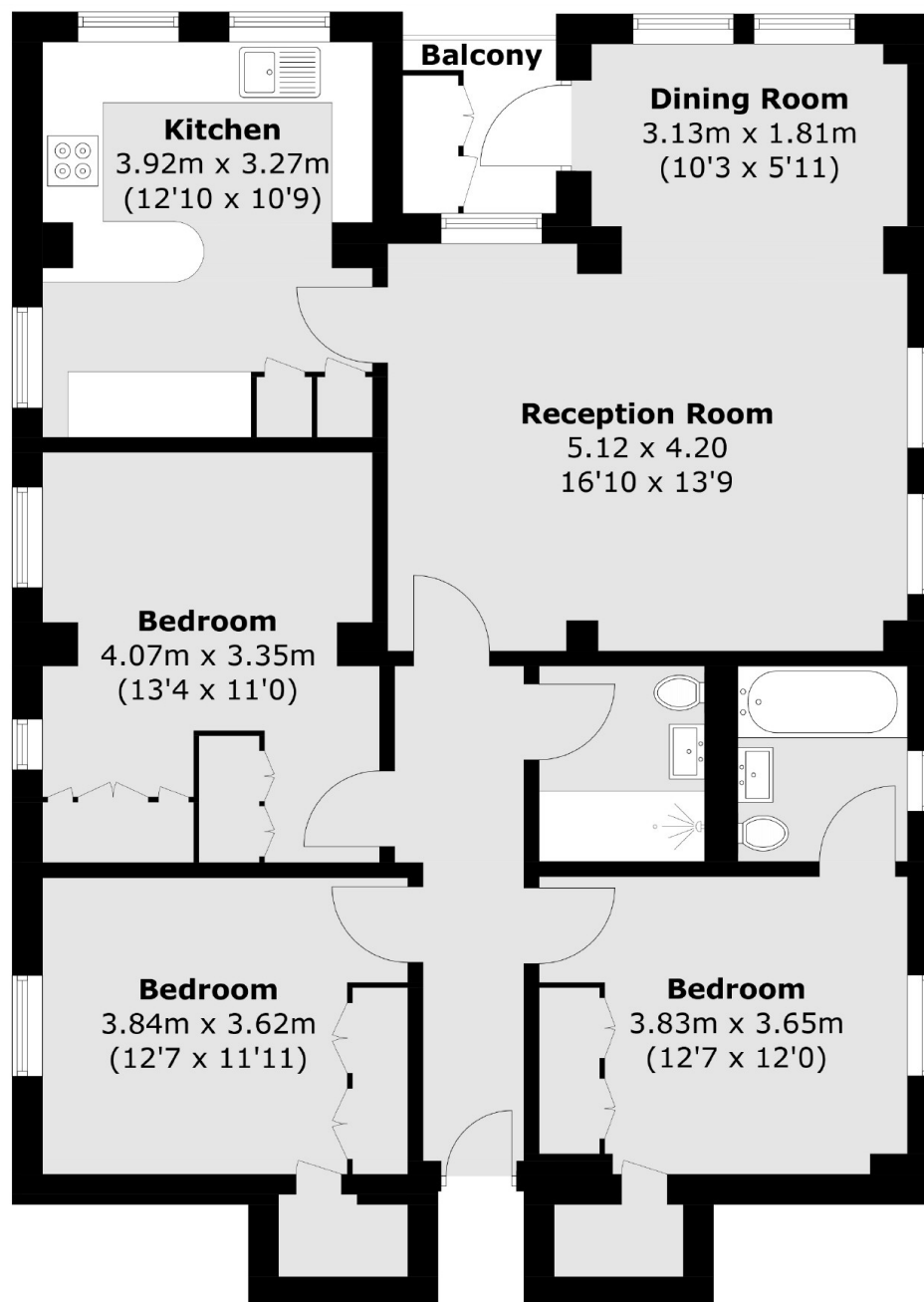
- Three Bedrooms
- Wooden floors throughout
- Balcony
- Separate eat-in Kitchen
- Porter
- Furnished







Hyde Park Gate, London, SW7



Third Floor

Total area (approx.): 94.5 sq. m (1,017 sq. ft)
Balcony: 2.6 sq. m (28.0 sq. ft)

Dexters

South Kensington
144 Old Brompton Road
London
SW7 4NR
Lettings
020 7244 7711

Energy Rating: C. We aim to make our particulars both accurate and reliable. However they are not guaranteed; nor do they form part of an offer or contract. If you require clarification on any points then please contact us, especially if you're traveling some distance to view. Please note that appliances and heating systems have not been tested and therefore no warranties can be given as to their good working order.

 **RICS** | Regulated
Estate Agent
and Letting Agent

[dexters.co.uk](https://www.dexters.co.uk)