

## Palace Gardens Terrace, W8

£425 Per week

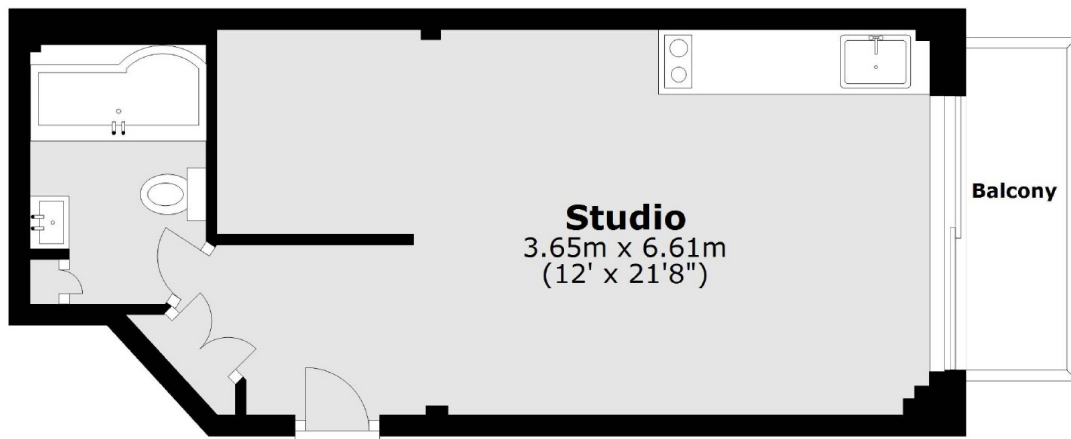
This bright and spacious studio apartment is located on the fifth floor of a portered building with lift access. This property has been finished to a high standard throughout, offering a well laid out studio with hard wood flooring throughout and a private balcony. It is the ideal property for a single professional looking for easy access to the city and a beautiful home.

Broadwalk Court is on Palace Gardens Terrace and is convenient for the wide range of shops and amenities of both Notting Hill Gate and Kensington High Street; including Whole Foods, 'Simply Food' and the Coronet' cinema.

### Features

- Porter
- Balcony
- Fifth Floor With Lift
- Wood Flooring
- Heating And Hot Water Included
- Notting Hill Gate Station

# Palace Gardens Terrace, London, W8



Main area: Approx. 30.3 sq. metres (325.8 sq. feet)  
Plus balconies, approx. 3.2 sq. metres (34.8 sq. feet)

**Dexters**

Kensington  
1 Campden Hill Road  
London  
W8 7DU  
Lettings  
020 7067 2434

Energy Rating: . We aim to make our particulars both accurate and reliable. However they are not guaranteed; nor do they form part of an offer or contract. If you require clarification on any points then please contact us, especially if you're traveling some distance to view. Please note that appliances and heating systems have not been tested and therefore no warranties can be given as to their good working order.

 **RICS** | Regulated  
Estate Agent  
and Letting Agent

[dexters.co.uk](https://www.dexters.co.uk)