

## Palace Gardens Terrace, W8

£485 Per week

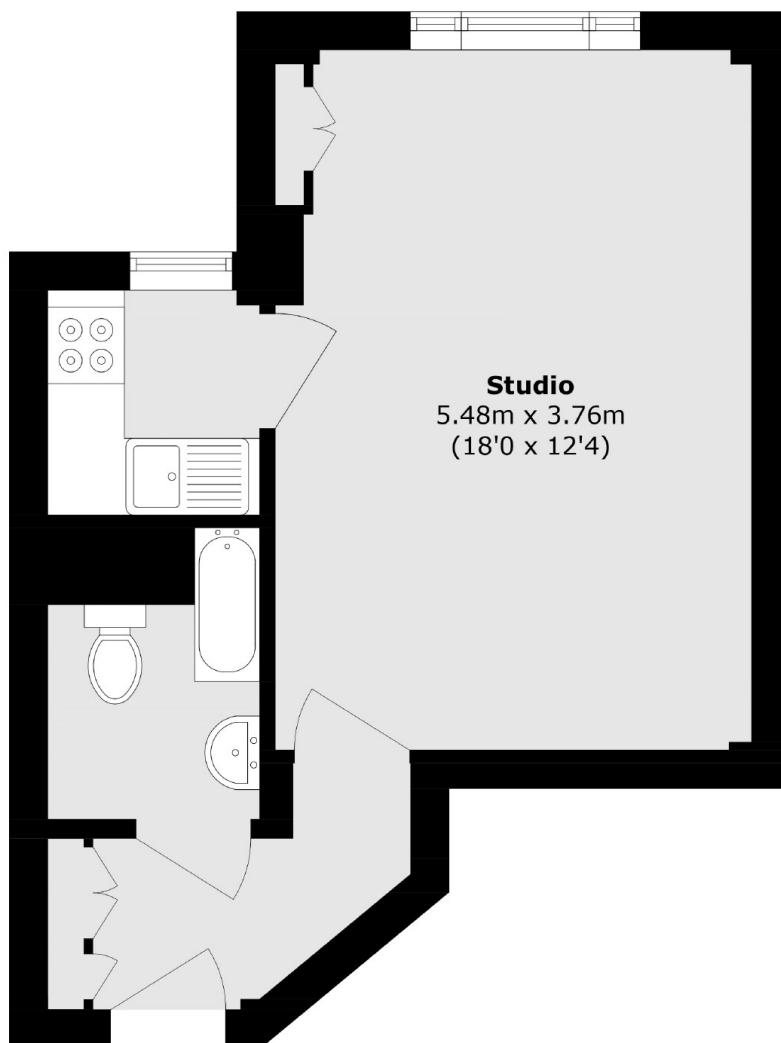
A newly renovated studio flat on the sixth floor of a portered block with a lift, situated just off Notting Hill Gate. This flat would be perfect for a single professional or student looking to be near the tube and the parks.

Broadwalk Court is on Palace Gardens Terrace and is convenient for the wide range of shops and amenities of both Notting Hill Gate and Kensington High Street, including Whole Foods

### Features

- Studio Flat
- Portered Building
- Recent Refurbishment
- Gorgeous Views
- Heating & Hot Water Included
- Notting Hill Gate Station

# Palace Gardens Terrace, London, W8



Total area (approx.): 31.9 sq. m (343.3 sq. ft)

## Dexters

Kensington  
1 Campden Hill Road  
London  
W8 7DU  
Lettings  
020 7067 2434

Energy Rating: C. We aim to make our particulars both accurate and reliable. However they are not guaranteed; nor do they form part of an offer or contract. If you require clarification on any points then please contact us, especially if you're traveling some distance to view. Please note that appliances and heating systems have not been tested and therefore no warranties can be given as to their good working order.

 **RICS** | Regulated  
Estate Agent  
and Letting Agent

[dexters.co.uk](https://www.dexters.co.uk)