

Bedford Gardens, W8

£375 Per week

This one bedroom property on the second floor of a well kept block offers a slick good quality finish throughout with private balcony, open plan living and access to communal gardens this property is ideal for a single professional or couple.

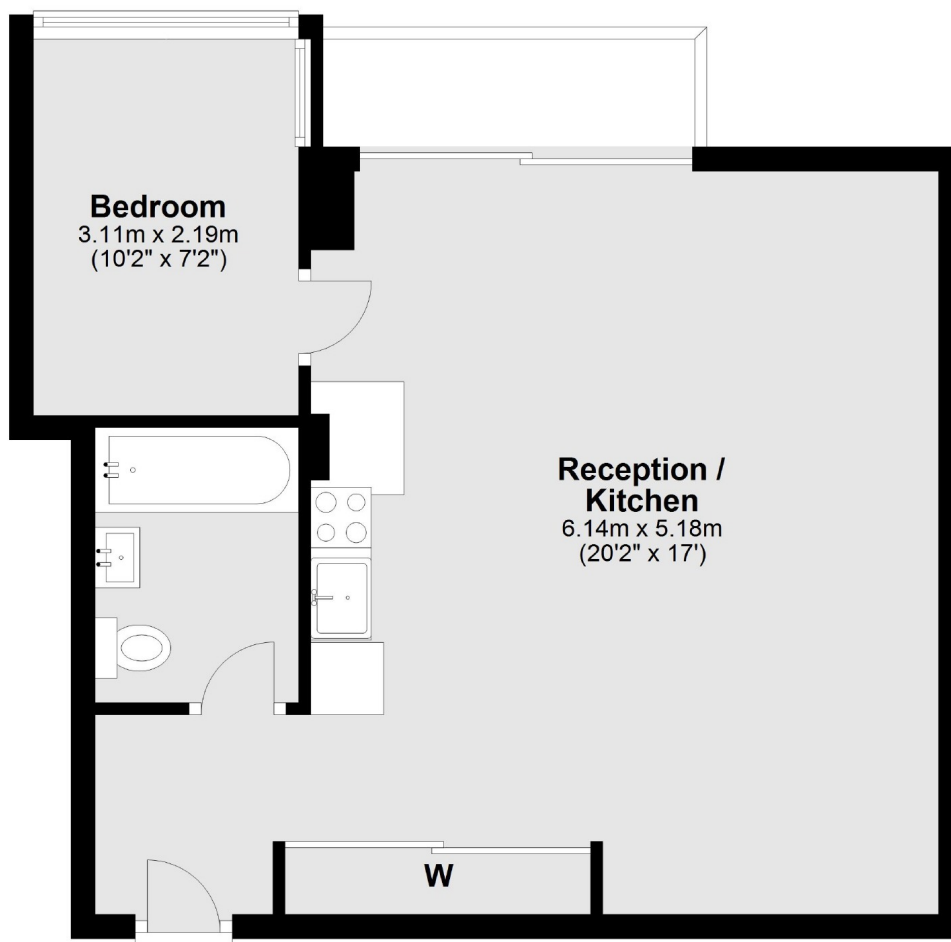
Situated between Kensington Church Street and Campden Hill Road which puts the property within walking distance of the ever popular Kensington Wine Rooms.

Features

- One Double Bedroom
- Open Plan Living
- Private Balcony
- Wood Flooring
- Communal Garden Access
- Notting Hill Gate Station

Bedford Gardens, London, W8

Second Floor



Main area: Approx. 46.2 sq. metres (497.1 sq. feet)
Plus balconies, approx. 3.1 sq. metres (33.8 sq. feet)

Contact

To arrange a viewing call our office on the number below or visit our website.



Energy Rating: D. We aim to make our particulars both accurate and reliable. However they are not guaranteed; nor do they form part of an offer or contract. If you require clarification on any points then please contact us, especially if you're traveling some distance to view. Please note that appliances and heating systems have not been tested and therefore no warranties can be given as to their good working order.