



Sheffield Terrace, W8

£1,440 Per week

Dexters



Sheffield Terrace, W8

This impressive two bedroom, two bathroom apartment offers the classic Kensington feel, with wood flooring, private patio and direct access to the stunning Sheffield Terrace Garden. With high ceilings this property ticks all the boxes for a variety of applicants looking for a highly sought after Kensington address.

Located perfectly between Kensington High Street and Notting Hill Gate, just moments from both popular high streets with amenities such as Whole Foods Market, Marks and Spencer, Equinox Fitness club and great transport links.

Features

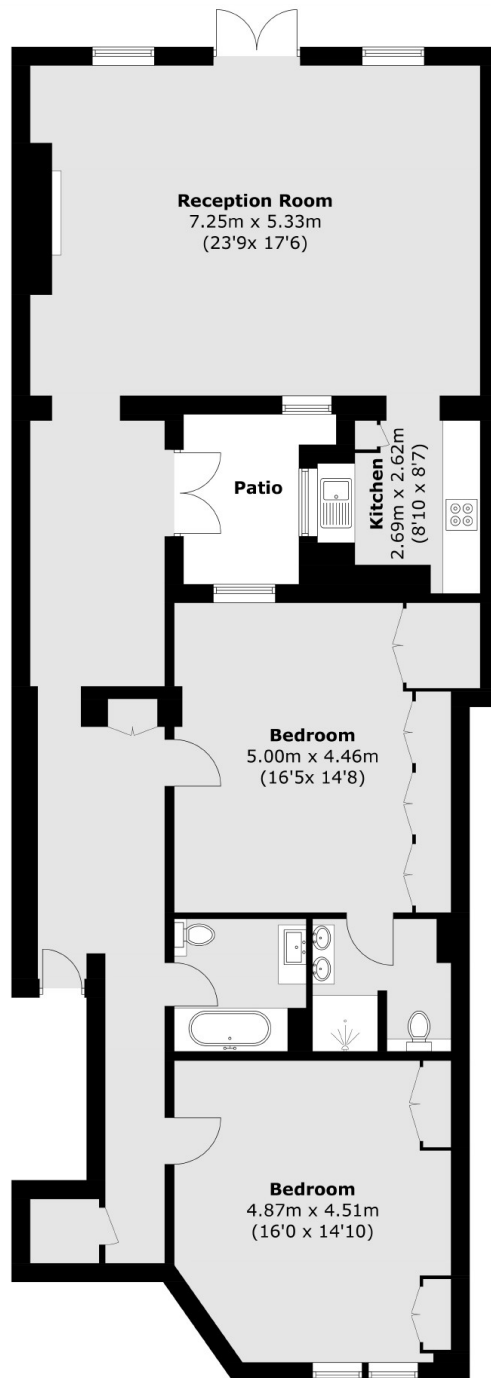
- Two Bedrooms
- Two Bathrooms
- Large Communal Garden
- Wood Flooring
- High Ceilings
- Private Patio







Sheffield Terrace, London, W8



Total area (approx.): 130.4 sq. m (1,403.6 sq. ft)