



Iverna Court, W8

£1,995 Per week

Dexters



Iverna Court, W8

This three bedroom apartment is located on a garden square just off Kensington High Street. Finished to a very high standard throughout, the property offers a large open plan reception/dining room and three beautiful double bedrooms with built in storage. This home is ideal for a single professional, couple or young family.

Iverna Court is one of Kensington's most desirable red brick portered mansion blocks. It is superbly located just off Wrights Lane and therefore enjoys easy access to all the shopping, leisure and transport facilities Kensington High Street has to offer, while Kensington Gardens and Holland Park are within close proximity.

Features

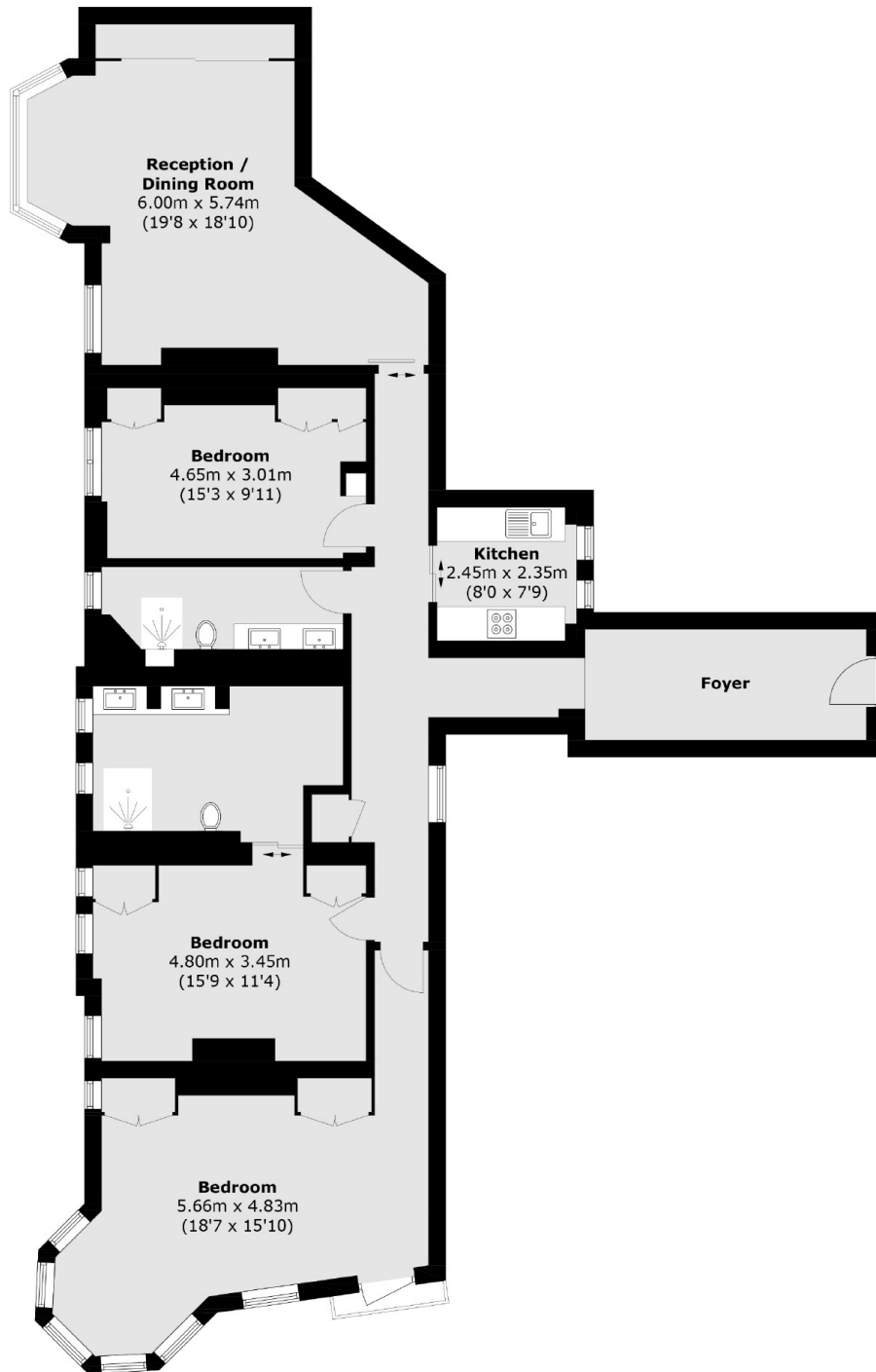
- Three Bedrooms
- Three Bathrooms
- Recently Refurbished
- Beautifully Furnished
- Portered Building
- Lift Access







Iverna Court, London, W8



Total area (approx.): 145.5 sq. m (1,566.2 sq. ft)