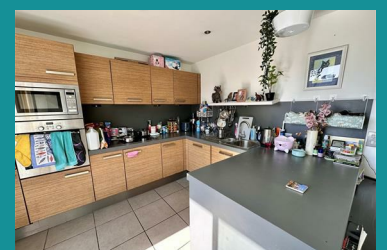
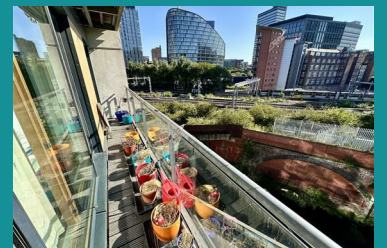




Apartment 402 Vallea Court, Red Bank, Manchester, M4
£240,000



Mortgage buyers welcome. Occupying a fourth floor position in one of the Green Quarter's modern developments, this bright two bedroom corner aspect apartment boasts a full length balcony with impressive views towards the city centre and an abundance of natural light. Vallea Court is positioned close to Victoria train station on the North side of the city and is a short walk from the vibrant Northern Quarter, Printworks and Market Street. The well maintained building includes a communal courtyard and has a local CO OP store next to it. The well proportioned accommodation briefly comprises; entrance hallway with storage cupboard, spacious open plan living room with access to the outside space, modern fitted kitchen diner with integrated appliances, two double bedrooms, en suite shower room and three piece bathroom. The property includes one secure allocated parking space which is accessed by fob entry system and can be found on one of the lower levels. EPC rating (C)



- Fourth Floor Apartment
- Full Length Private Balcony
- Bright Corner Aspect Position
- Open Plan Living Room
- Short Walk from Northern Quarter
- Two Double Bedrooms
- One Secure Allocated Parking Space
- Bathroom + En Suite Shower Room
- Close to Victoria Train Station & Metrolink
- Mortgage Buyers Welcome