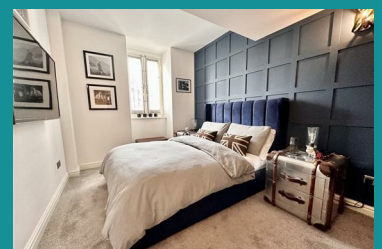




Apartment 72 The Royal, Wilton Place, Salford, M3 6FT
£2,000



**** DEPOSIT FREE OPTION AVAILABLE **** Available Immediately. Furnished. This impressive three bedroom duplex apartment boasts a wealth of space covering over 1000 square foot of stylish interior. The top floor property forms part of a popular converted development which stands proudly on the south end of Chapel Street in an area which has dramatically transformed over recent years into an exciting hub of activity fuelled by an increase in the number of independent bars, cafes, restaurants and newly built developments. In contrast, there is impressive original architecture nearby comprising; the Grade II listed Salford Cathedral, St Philips Church and former Town Hall at Bexley Square. Manchester City Centre is a short walk away and a few minutes in the opposite direction you will find Peel Park and Salford Crescent train station. The accommodation is presented to a high standard and briefly comprises; entrance hallway with under stairs storage, three spacious double bedrooms, luxury en suite shower room off the master and matching three piece bathroom suite to the ground floor. Upstairs there is a bright open plan living room, a fantastic kitchen diner with Velux windows and high quality finishings and separate raised dining area with access to a large terrace with stunning views. EPC rating (C) Council tax band (D)



- Available Immediately
- Top Floor Position
- Luxury Bathroom and En Suite Shower Room
- Furnished Accommodation
- Three Spacious Double Bedrooms
- Stunning Duplex Apartment
- Beautifully Presented Throughout
- Short Walk from Manchester City Centre
- Close to Salford Crescent Train Station & Bus Routes
- External Space with Shared Access