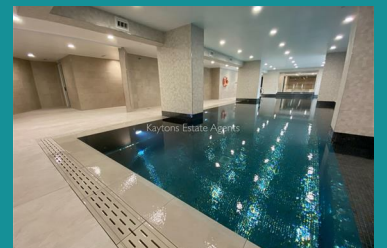




Apartment 321 Local Crescent (Block C), Salford, M5 £2,000



** ONLINE VIDEO TOUR AVAILABLE ** Available 12th June. Furnished. This luxury three bedroom apartment forms part of recently built development which is located off Chapel Street overlooking the river Irwell in a convenient area of the city close to Spinningfields and Salford Crescent train station. Occupying a third floor position, the bright and generously sized property benefits from floor to ceiling windows and Juliet balcony overlooking the landscaped gardens. As well as a 24 hour concierge service, the residents at The Crescent have access to a number of on site facilities which include; two cinemas, gymnasium, swimming pool, sauna and roof terrace. The immaculate accommodation briefly comprises: entrance hallway with two storage cupboards, open plan living room, kitchen diner with integrated appliances, three spacious double bedroom each with fitted wardrobes (master with en suite bathroom) and further bathroom suite off the hallway. Minimum 12 month tenancy. EPC Rating (B) Council tax band (C)



- Available 12th June
- Furnished Apartment
- 24 Hour Concierge Service
- Two Bathroom Suites
- Short Walk from Spinningfields & Deansgate
- Three Double Bedrooms with Fitted Wardrobes
- Third Floor Position
- Luxury Accommodation
- Residents Swimming Pool, Gym, Sauna and Cinema Rooms
- Communal Courtyards & Roof Terrace