

## Tedworth Square, SW3

**£738** Per week

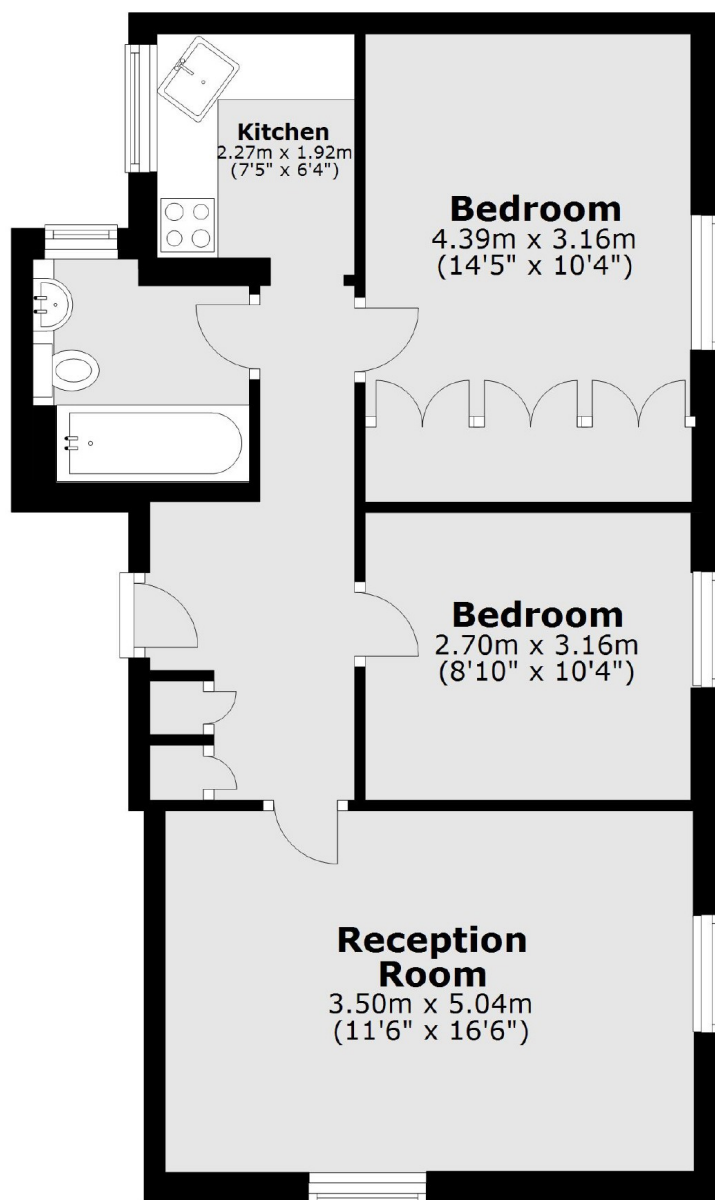
This two double bedroom property to let is arranged on the ground floor of a well maintained secure apartment building overlooking the sought after Tedworth Square gardens.

Tedworth Court is situated on one of Chelsea most prestigious garden squares close to Sloane Square and within easy walking distance of Knightsbridge and Belgravia. Access to the residents communal garden square.

### Features

- Two Double Bedrooms
- One Bathroom
- New Flooring
- Communal Garden
- Heating Included
- Built-in Storage

# Tedworth Square, London, SW3



Total area: approx. 57.9 sq. metres (623.7 sq. feet)