



## Chelsea Embankment, SW3

£875,000

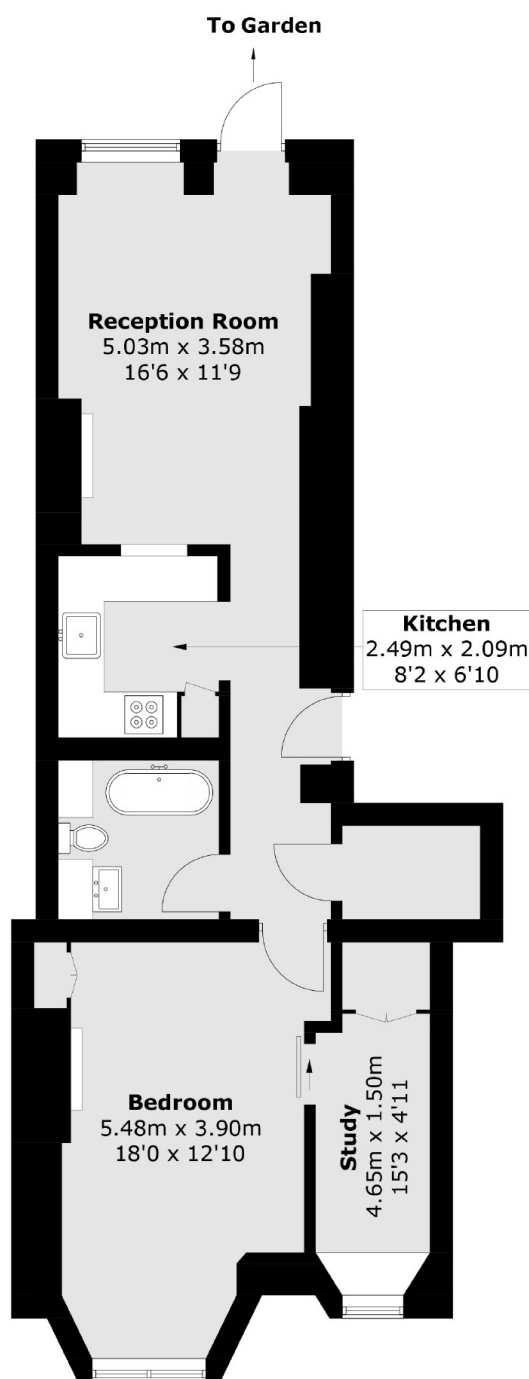
A wonderful apartment with a share of the freehold and direct access to communal gardens. This property has high ceilings, great volume and has worked excellently as a London home for our clients.

Delahay House is a Grade II listed building that has a recent gone through a thorough schedule of works. Chelsea Embankment runs north of the River Thames and was opened in 1874 by Prince Alfred, Duke of Edinburgh.

### Features

- Communal Garden
- High Ceilings
- Grade II Listed
- Excellent Storage Space
- Lift
- Refurbished Communal Areas

# Chelsea Embankment, London, SW3



## Lower Ground Floor

Total area (approx.): 63.2 sq. m (680.3 sq. ft)

# Dexters

Chelsea and Belgravia  
45 Sloane Avenue  
London  
SW3 3DH  
Sales  
020 7590 9510

Energy Rating: . We aim to make our particulars both accurate and reliable. However they are not guaranteed; nor do they form part of an offer or contract. If you require clarification on any points then please contact us, especially if you're traveling some distance to view. Please note that appliances and heating systems have not been tested and therefore no warranties can be given as to their good working order.

 **RICS** | Regulated  
Estate Agent  
and Letting Agent

[dexters.co.uk](https://www.dexters.co.uk)