



Milmans Street, SW10

£595,000

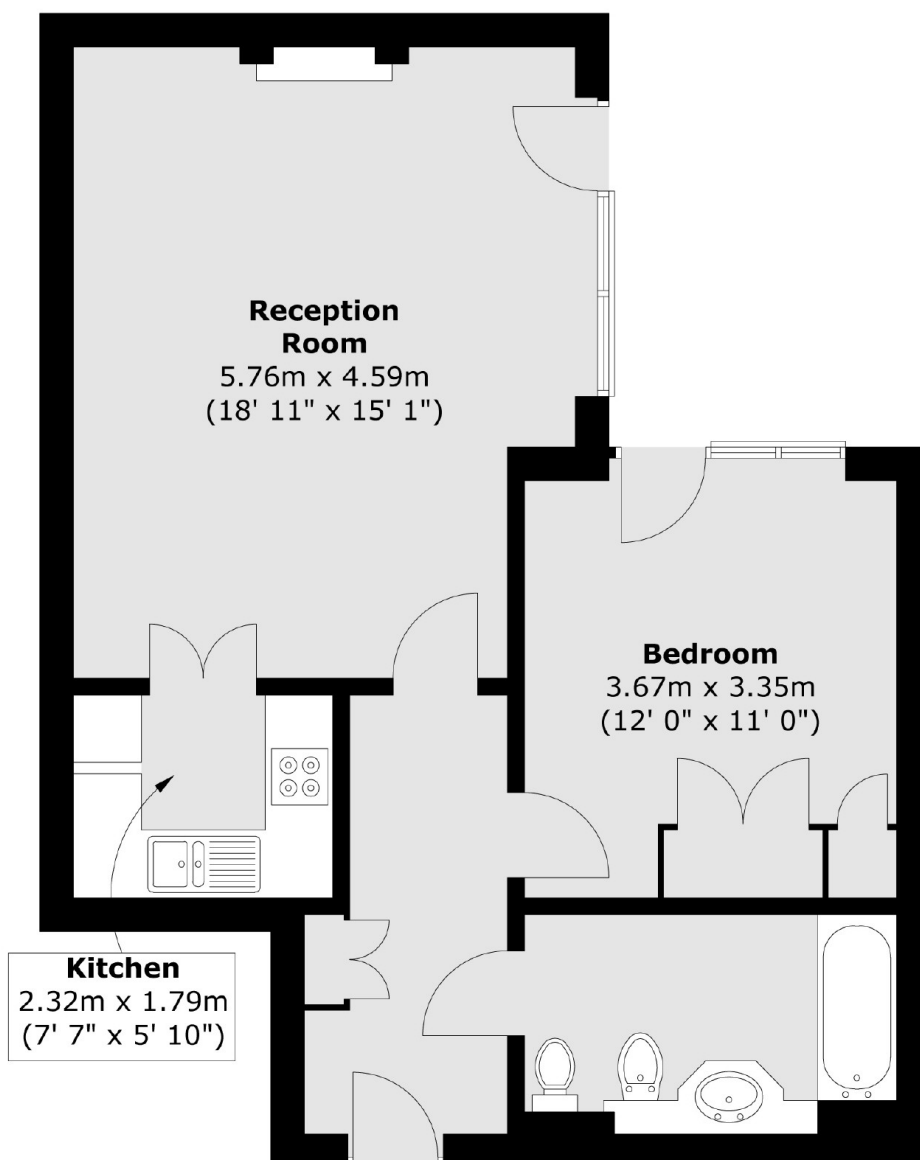
A one bedroom property ideally located in Chelsea. This apartment has a long lease, secure parking and direct access to communal gardens.

Elizabeth Court is located on Milmans Street, south of the King's Road and exclusively reserved for those over 60 years old. Close by are cafés, restaurants and shops that are within easy walking distance.

Features

- Leasehold
- Patio
- Secure Parking
- Estate Manager
- One Bedroom
- Laundry Facilities

Milmans Street, London, SW10



Ground Floor

Total area (approx.) : 56.2 sq. m (605 sq. ft)

Dexters

Chelsea and Belgravia
45 Sloane Avenue
London
SW3 3DH
Sales
020 7590 9510

Energy Rating: . We aim to make our particulars both accurate and reliable. However they are not guaranteed; nor do they form part of an offer or contract. If you require clarification on any points then please contact us, especially if you're traveling some distance to view. Please note that appliances and heating systems have not been tested and therefore no warranties can be given as to their good working order.

 **RICS** | Regulated
Estate Agent
and Letting Agent

[dexters.co.uk](https://www.dexters.co.uk)