



## Milmans Street, SW10

£595,000

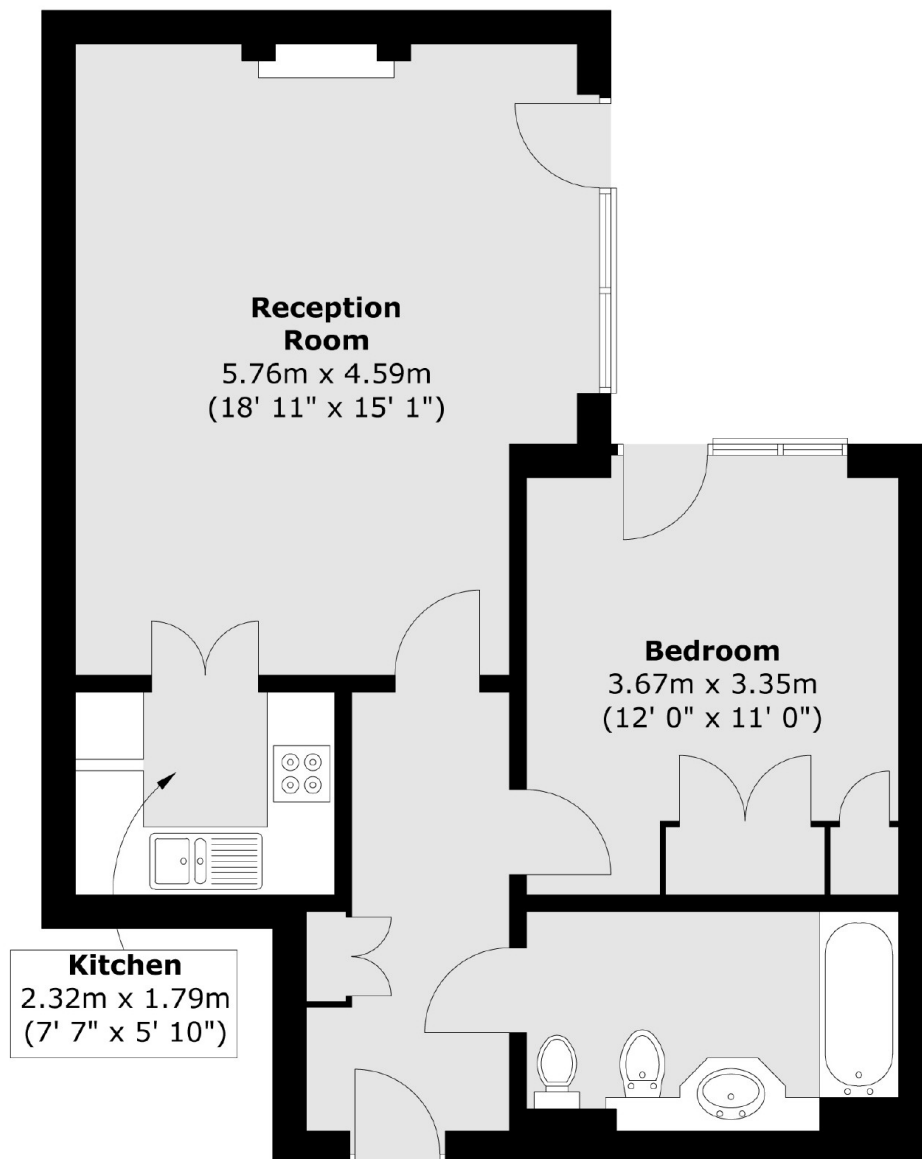
A one bedroom property with direct access to communal gardens. This apartment has a long lease, secure parking and the benefit of a residential porter.

Elizabeth Court is located on Milmans Street, south of the King's Road and exclusively reserved for those over 55 years old. Close by are cafés, restaurants and shops that are within easy walking distance.

### Features

- Leasehold
- Patio
- Secure Parking
- Porter (Monday - Friday)
- One Bedroom
- Laundry Facilities

# Milmans Street, London, SW10



## Ground Floor

Total area (approx.) : 56.2 sq. m (605 sq. ft)