



Elm Park Gardens, SW10

£400,000

A one bedroom flat in Chelsea now in need of updating. This property has access to communal gardens and now provides an incoming purchaser the opportunity to refurbish the property to their own taste while adding value.

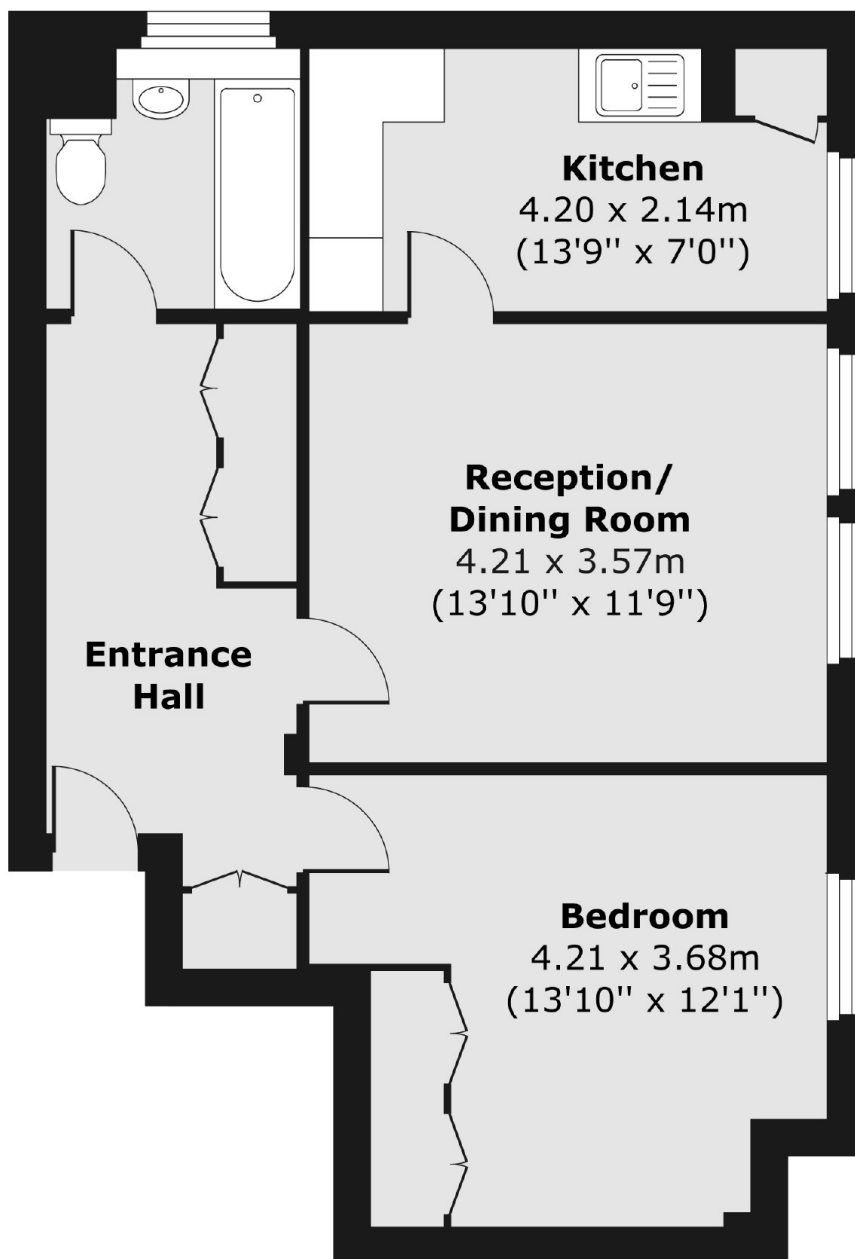
Elm Park Gardens is ideally situated between the King's Road and Fulham Road. South Kensington, Gloucester Road and Sloane Square tube stations are all within walking distance.

Features

- Lift
- One Bedroom
- Popular Location
- Communal Garden
- Ideal Investment
- Leasehold - Expires 29/09/2075

Elm Park Gardens, London, SW10

Second Floor



Total area (approx.) 53.59 sq. m (577 sq. ft)