



Coleridge Gardens, SW10

£675 Per week

A superb one double bedroom apartment set within an immaculate and highly sought after development located just off Chelsea's desirable Kings Road. Perfect for a professional single person or a couple.

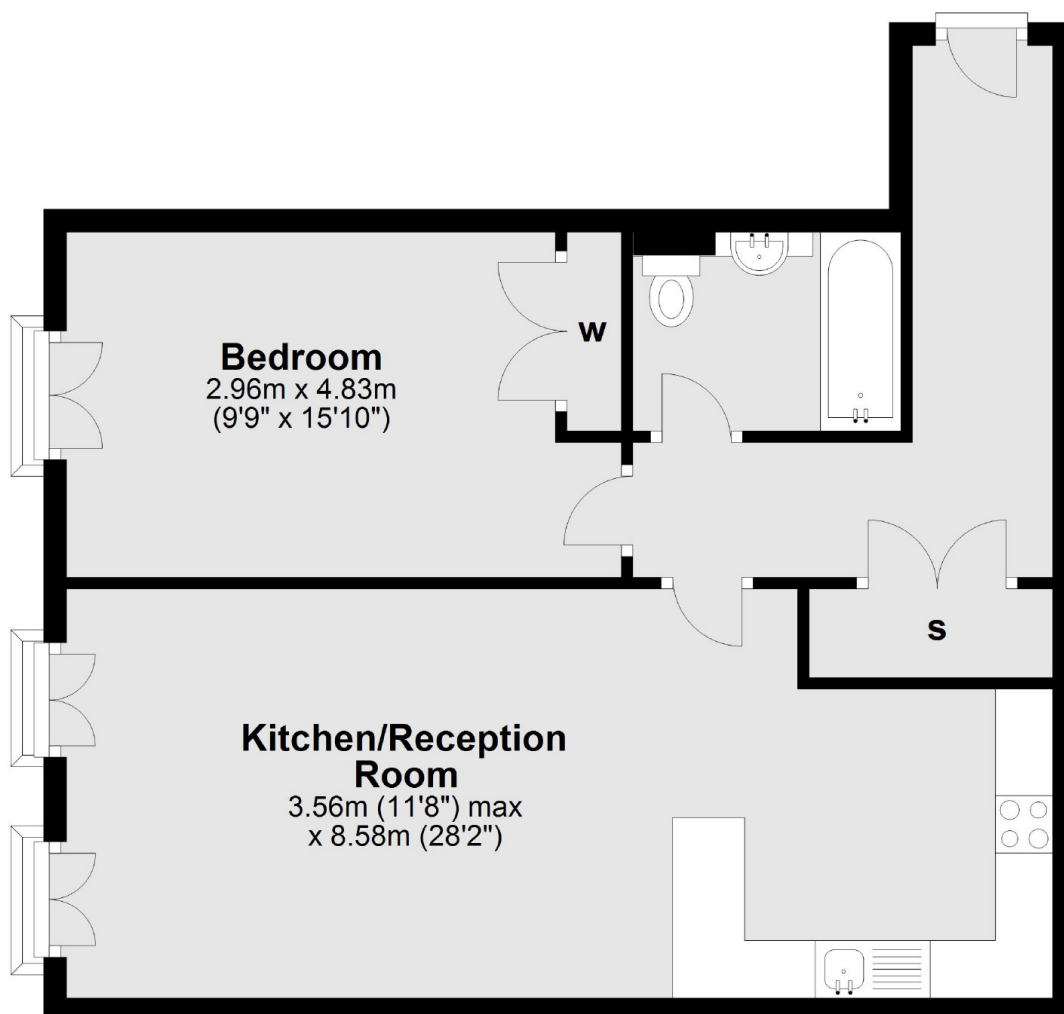
Kings Chelsea, Coleridge Gardens is a private development located between the Kings Road and Fulham Road. Residents have use of the fully equipped gym, swimming pool and the 24h security.

Features

- Private Gated Development
- One Double Bedroom
- 24 Hour Concierge
- On Site Gym
- Swimming Pool
- Tennis Court

Coleridge Gardens, London, SW10

First Floor



Total area: approx. 59.2 sq. metres (637.4 sq. feet)