



## Edith Grove, SW10

### £625,000

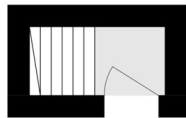
A beautifully finished apartment with potential to develop, subject to the usual consents. This property would be an ideal London base, buy-to-let investment or development opportunity.

Edith Grove is ideally located between Chelsea Embankment and the Fulham Road with transport links, boutique shops and restaurants within easy walking distance.

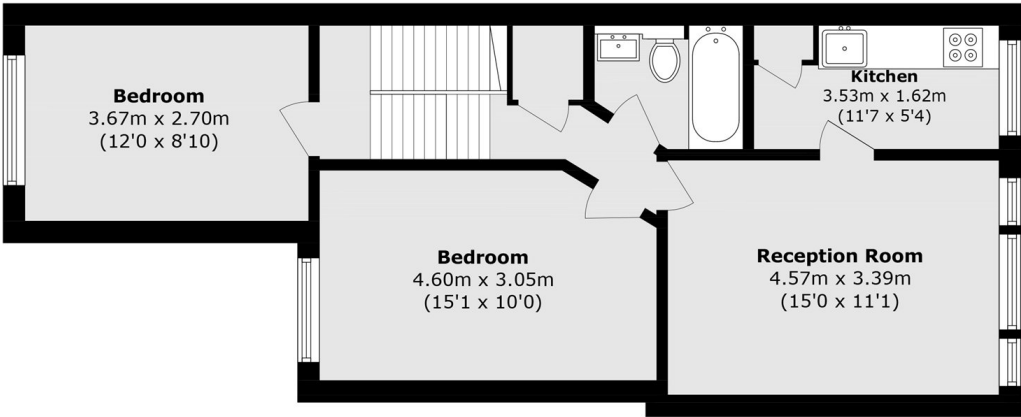
### Features

- Fantastic Condition
- Long Leasehold
- Potential to Extend (STPP)
- Two Bedrooms
- First Floor Entrance
- Smart Communal Areas

# Edith Grove, London, SW10



First Floor



Second Floor

Total area (approx.): 59.4 sq. m (639.3 sq. ft)