



Sloane Court East, SW3

£2,307 Per week

Dexters



Sloane Court East, SW3

A refurbished lateral three bedroom apartment to let in Sloane Square. The property has been finished to a very high standard and is perfect for those looking for a home completed to the highest standard.

The property is arranged on the second floor of a prestigious mansion block with lift access and well maintained communal parts.

Upon entering the property is a very grand and spacious hallway which leads into a large double reception room with high ceilings, a drinks cupboard and bay windows. Both rooms have working fireplaces and the second room is used as a formal dining area. The kitchen is separate with an informal dining area.

There are three bedrooms, two doubles and 1 single. There are two bathrooms, one en suite in the master bedroom and a further family size bathroom.

Sloane Court East is located just behind Sloane Square Underground with easy access to Kings Road, Pimlico Road and Sloane Street. Duke of York Square is a must on Saturdays for lunch!

Features

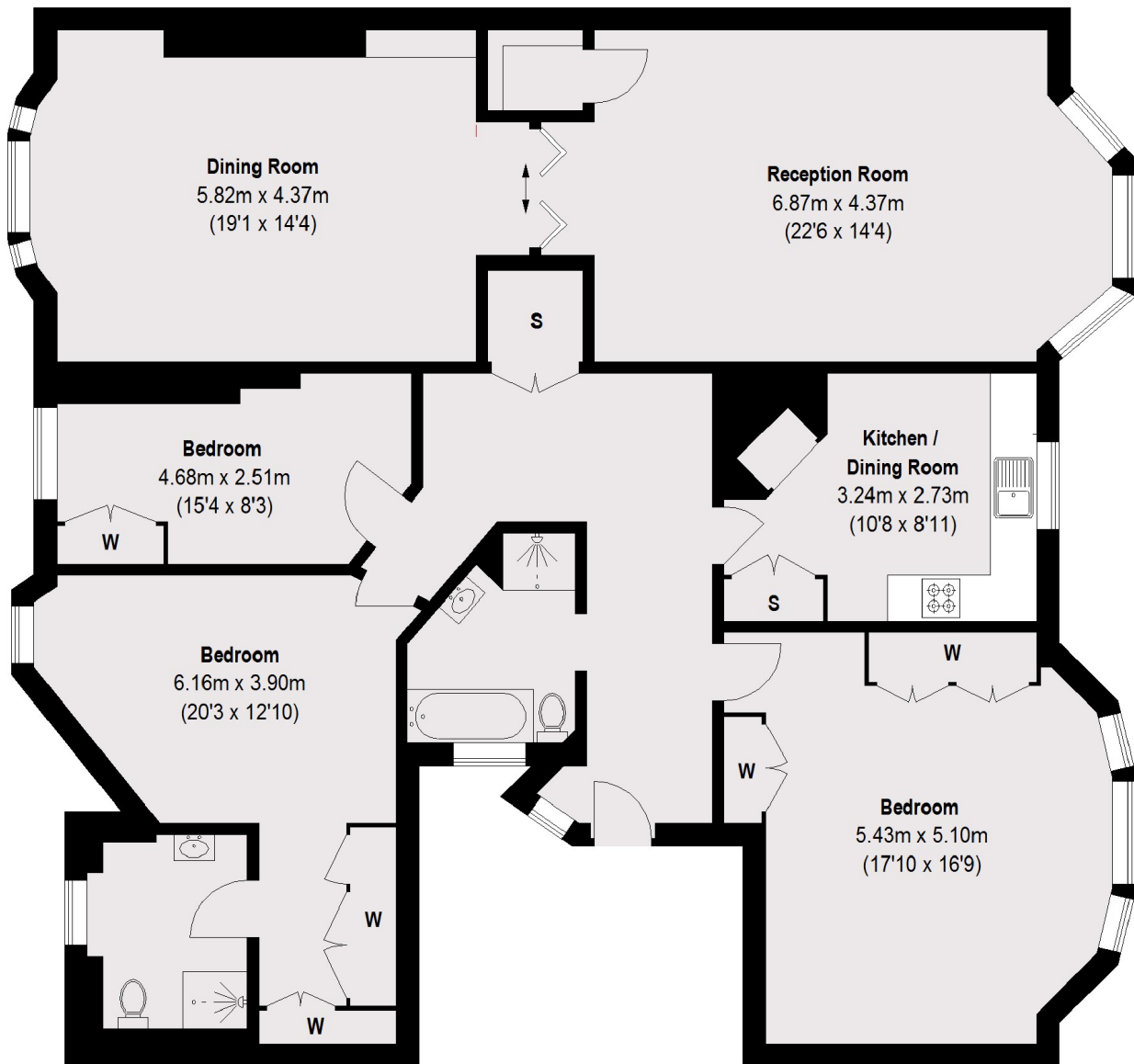
- Three Bedrooms
- Two Bathrooms
- Two Reception Rooms
- Refurbished Throughout
- Second Floor with Lift
- On Site Porter







Sloane Court East, London, SW3



Second Floor

Total area (approx.): 159.4 sq. m (1715 sq. ft)