



## Edith Grove, SW10

### £615,000

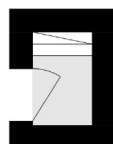
A two bedroom apartment with development potential, subject to the usual consents. This property has proven to be an excellent rental investment for the current owner and would also be a great London base.

Edith Grove is ideally located between Chelsea Embankment and the Fulham Road with transport links, boutique shops and restaurants within easy walking distance.

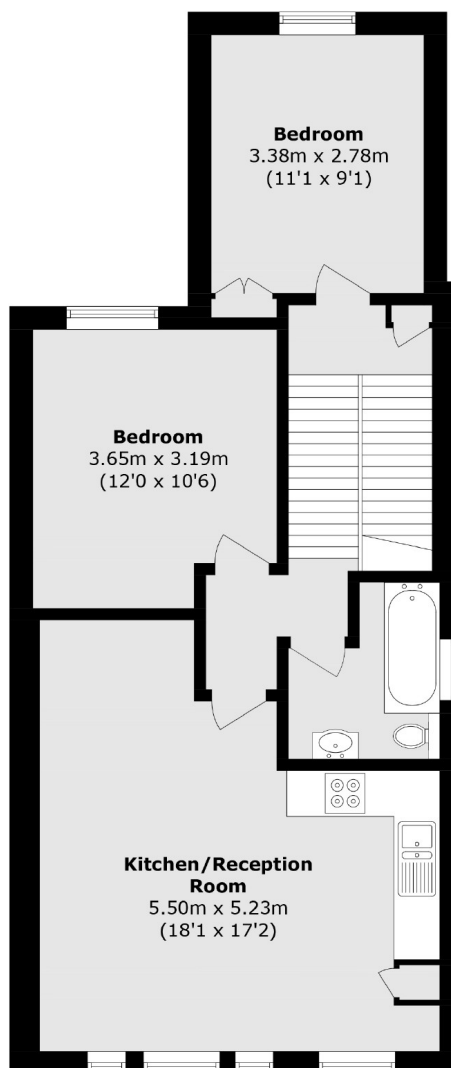
### Features

- Share of Freehold
- Two Bedrooms
- Great Condition
- One Bathroom
- Excellent Rental Investment
- Potential to Extend (STPP)

# Edith Grove, London, SW10



**First Floor**



**Second Floor**

Total area (approx.): 61.9 sq. m (666.2 sq. ft)