



Tite Street, SW3

£1,450,000

Dexters



Tite Street, SW3

A wonderfully unique two bedroom apartment with high ceilings and its own private patio. Entered on the ground floor, this property previously went through a 'back to brick' refurbishment and also has the additional benefit of a 993 year lease as well as smart common parts.

Set within a handsome red brick building, the property is approached through well maintained communal areas. As you enter the apartment, you are welcomed by large reception room filled with light and character features as well as a modern kitchen. The double bedrooms have an abundance of built-in storage, their own bathrooms and both lead onto the private patio.

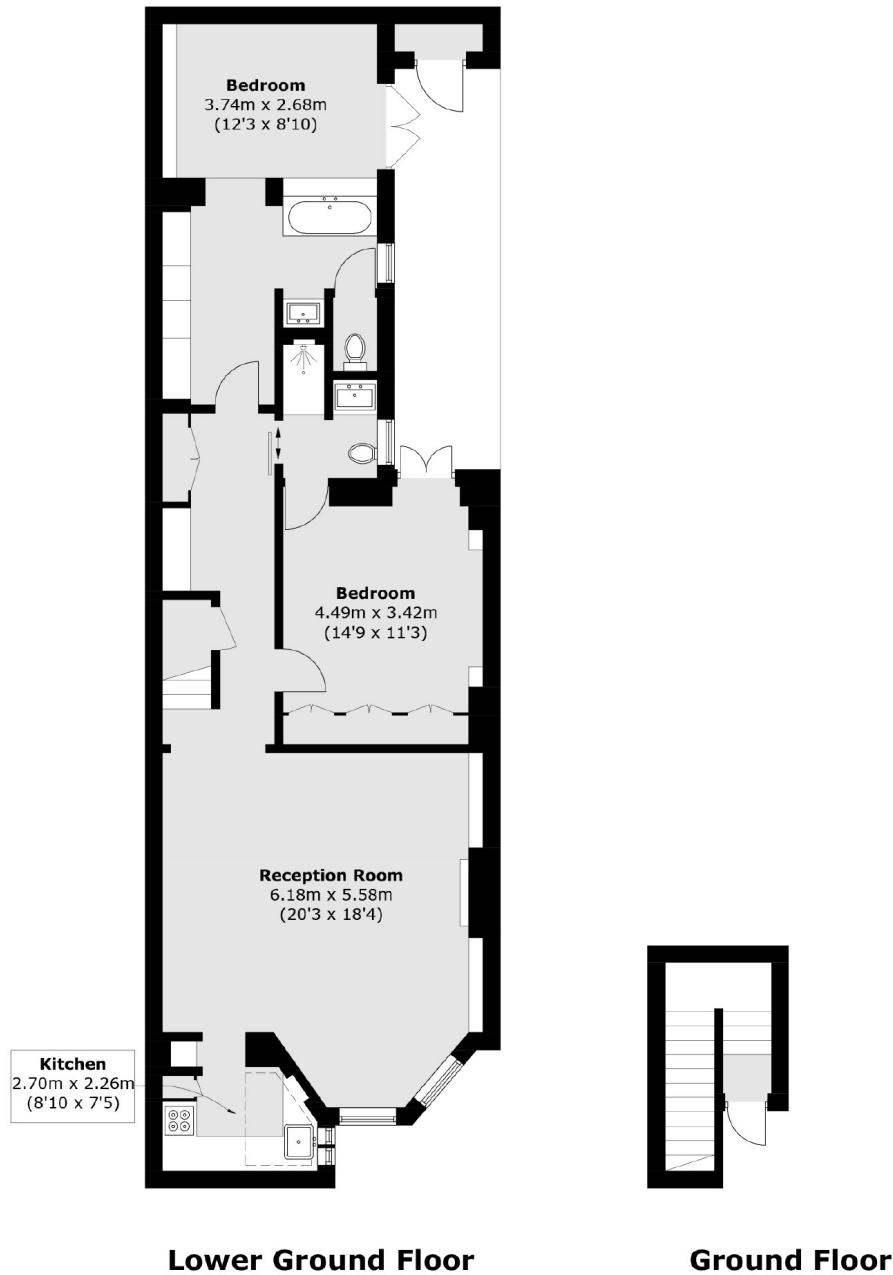
Located south of the King's Road, Tite Street was home to Oscar Wilde from 1844 to 1895. Burton Court, Pavilion Road and Duke of York Square are all within easy walking distance.

Features

- Fantastic Condition
- Two Double Bedrooms
- Private Patio
- Two Bathrooms
- Leasehold (993 years remaining)



Tite Street, London, SW3



Total area (approx.): 98.3 sq. m (1,058.1 sq. ft)
External Storage : 0.9 sq. m (9.7 sq. ft)

Dexters

Chelsea and Belgravia
45 Sloane Avenue
London
SW3 3DH
Sales
020 7590 9510

Energy Rating: . We aim to make our particulars both accurate and reliable. However they are not guaranteed; nor do they form part of an offer or contract. If you require clarification on any points then please contact us, especially if you're traveling some distance to view. Please note that appliances and heating systems have not been tested and therefore no warranties can be given as to their good working order.

 **RICS** | Regulated
Estate Agent
and Letting Agent

[dexters.co.uk](https://www.dexters.co.uk)