



## Chelsea Cloisters, SW3

### £250,000

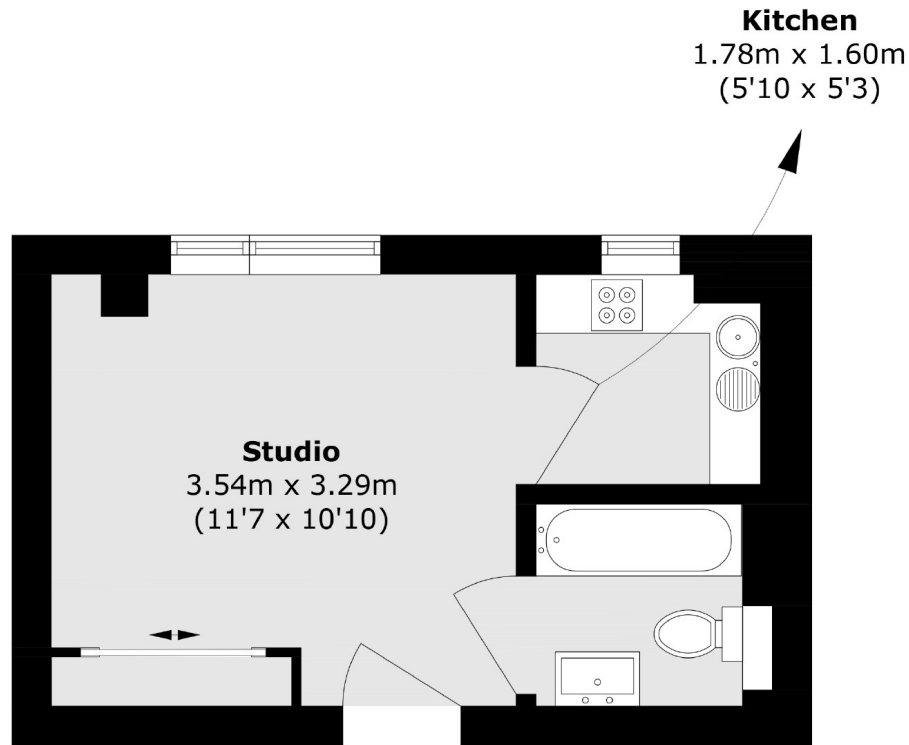
A studio apartment located within a portered building. This property is positioned on the second floor (with lift) and would work very well as a rental investment or London base.

Chelsea Cloisters is ideally located between Sloane Square and South Kensington tube stations. The world famous shops and restaurants the King's Road and Pavilion Road have to offer are also within walking distance.

### Features

- Lift
- 24hr Porter
- Leasehold
- Excellent Rental Investment
- Studio Apartment
- Second Floor

# Chelsea Cloisters, London, SW3



## Second Floor

Total area (approx.): 18.0 sq. m (193.7 sq. ft)