



Draycott Place, SW3

£350,000

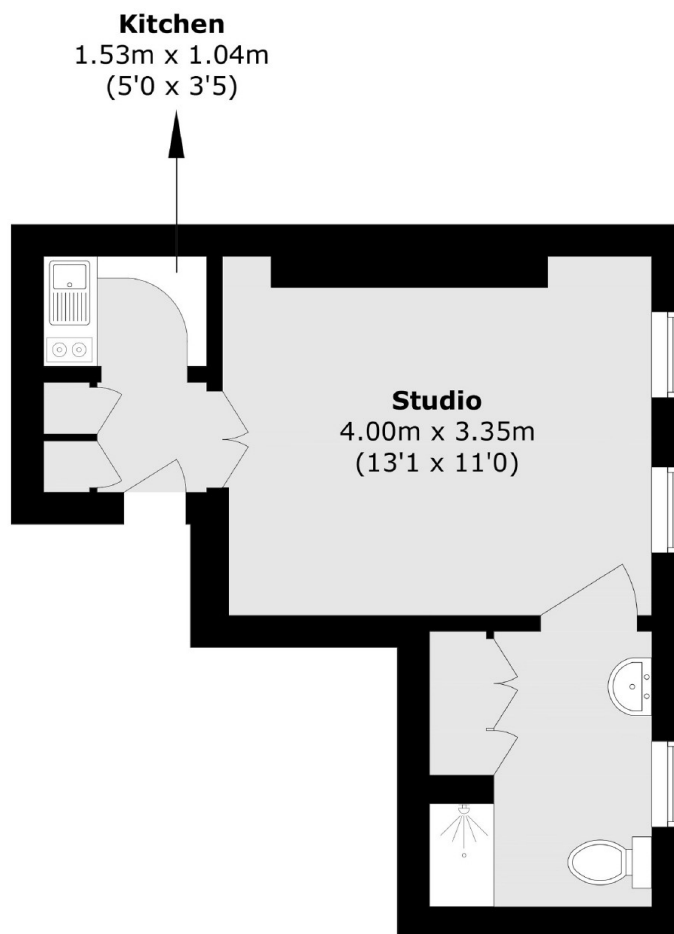
A studio apartment moments from Pavilion Road and Duke of York Square. This property is filled with light and benefits from a long lease as well as a low service charge.

Draycott Place runs parallel to the King's Road which is home to plenty of boutique shops and restaurants. Sloane Square, Burton Court and Pavilion Road are all within walking distance.

Features

Studio Apartment
Long Leasehold
Ideal Investment
Popular Location
Second Floor
Low Service Charge

Draycott Place, London, SW3



Second Floor

Total area (approx.): 22.7 sq. m (244.3 sq. ft)

Dexters

Chelsea and Belgravia
45 Sloane Avenue
London
SW3 3DH
Sales
020 7590 9510

Energy Rating: . We aim to make our particulars both accurate and reliable. However they are not guaranteed; nor do they form part of an offer or contract. If you require clarification on any points then please contact us, especially if you're traveling some distance to view. Please note that appliances and heating systems have not been tested and therefore no warranties can be given as to their good working order.

 **RICS** | Regulated
Estate Agent
and Letting Agent

[dexters.co.uk](https://www.dexters.co.uk)