



Culford Gardens, SW3

£1,475,000

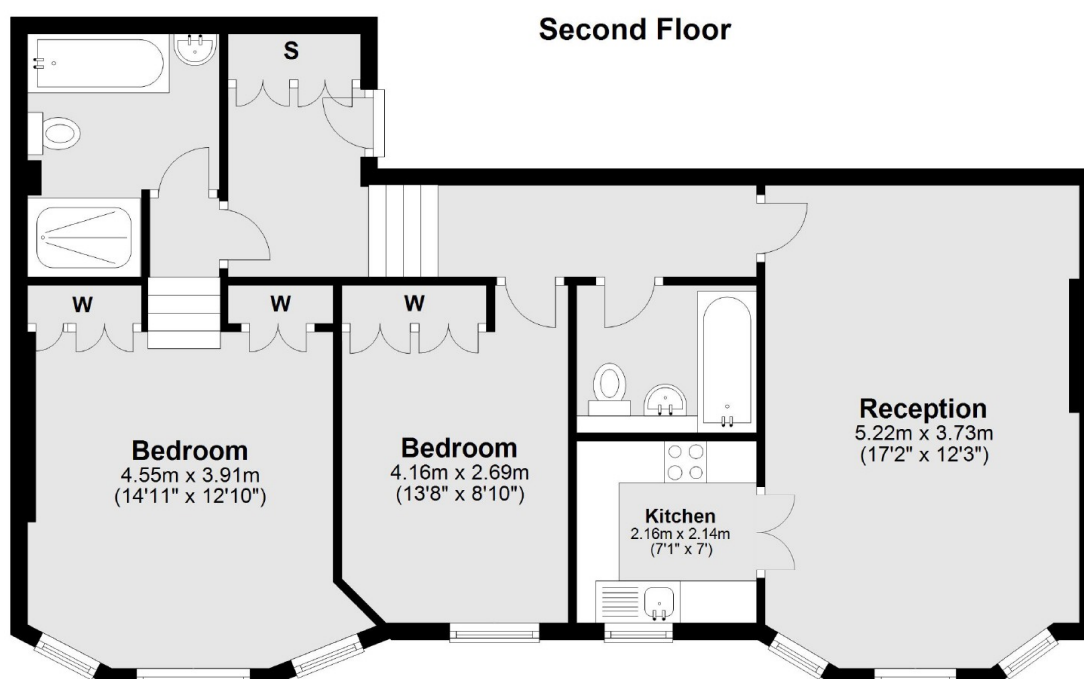
A two bedroom, two bathroom apartment located on the second floor. This property has high ceilings, smart communal areas and the benefit of lift access.

Culford Gardens is a quiet one-way street a short walk from Pavilion Road and Peter Jones. Sloane Square, Duke of York Square and Burton Court are also close by.

Features

- Lift
- Long Leasehold
- Two Bedrooms
- Two Bathrooms
- Quiet Location
- High Ceilings

Culford Gardens, London, SW3



Total area: approx. 75.0 sq. metres (807.8 sq. feet)

Dexters

Chelsea and Belgravia
45 Sloane Avenue
London
SW3 3DH
Sales
020 7590 9510

Energy Rating: . We aim to make our particulars both accurate and reliable. However they are not guaranteed; nor do they form part of an offer or contract. If you require clarification on any points then please contact us, especially if you're traveling some distance to view. Please note that appliances and heating systems have not been tested and therefore no warranties can be given as to their good working order.

 **RICS** | Regulated
Estate Agent
and Letting Agent

[dexters.co.uk](https://www.dexters.co.uk)