



Little Chester Street, SW1X

£1,961 Per week

A recently newly refurbished three double bedroom house in the heart of Belgravia. The house is flooded by natural light and has beautiful herringbone flooring in the reception.

Little Chester Street is quiet residential street in Belgravia. Elisabeth Street and Motcomb Street are both within walking distance with their selection of restaurants, boutiques and delicatessens.

Features

- Terraced House
- Three Double Bedrooms
- Two Bathroom
- Herringbone Wood Flooring
- Patio Garden
- Feature Fireplace



Little Chester Street, SW1X

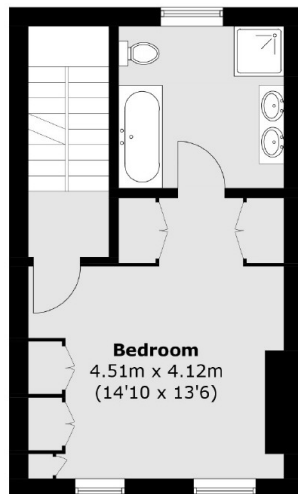
A charming mid terraced house on a quiet street in Belgravia. The house has been extensively refurbished throughout and includes a brand new kitchen on the lower ground floor.

The reception on the ground floor has beautiful herringbone floors and feature fireplace. There is also a patio off the first floor landing with space to sit outside and enjoy a drink in the warmer months.

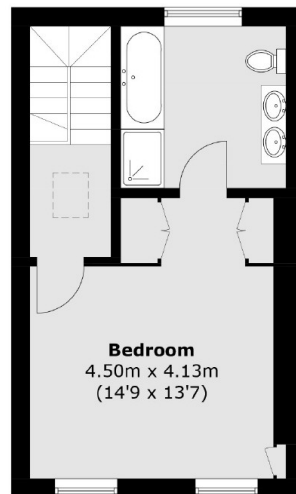
The master bedroom is on the first floor with an en-suite and an abundance of built in storage. The guest bedroom is on the second floor and mirrors the footprint of the master bedroom. There is a third bedroom that makes the perfect study to work from home in.



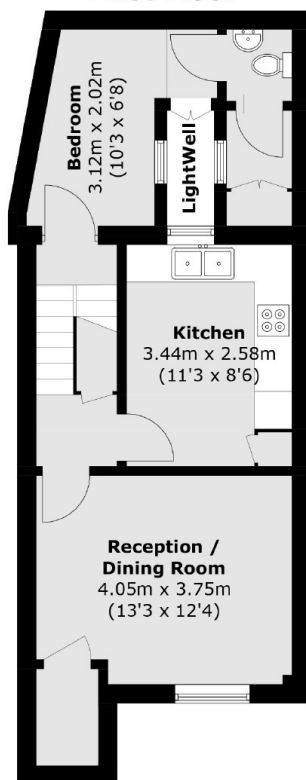
Little Chester Street, London, SW1X



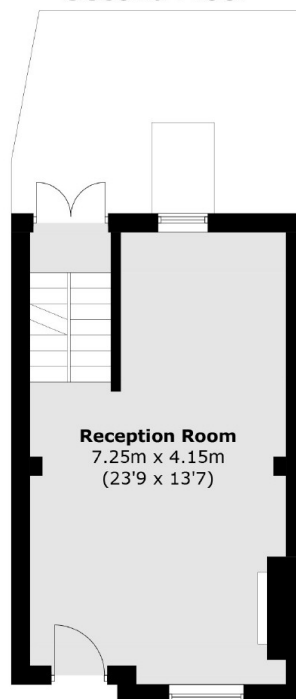
First Floor



Second Floor



Lower Ground Floor



Raised Ground Floor

Total area (approx.): 131.0 sq. m (1,410.1 sq. ft)
(Excluding Lightwell)