



Whiteheads Grove, SW3

£1,557 Per week

A large two double bedroom, two bathroom apartment situated within Cranmer Court. The property is conveniently positioned within the development and would work perfectly for a couple or professional sharers.

Cranmer Court is located parallel to Sloane Avenue which is ideally situated between Sloane Square and South Kensington tube stations. The local cafés and boutique shops Chelsea Green has to offer are also moments away.

Features

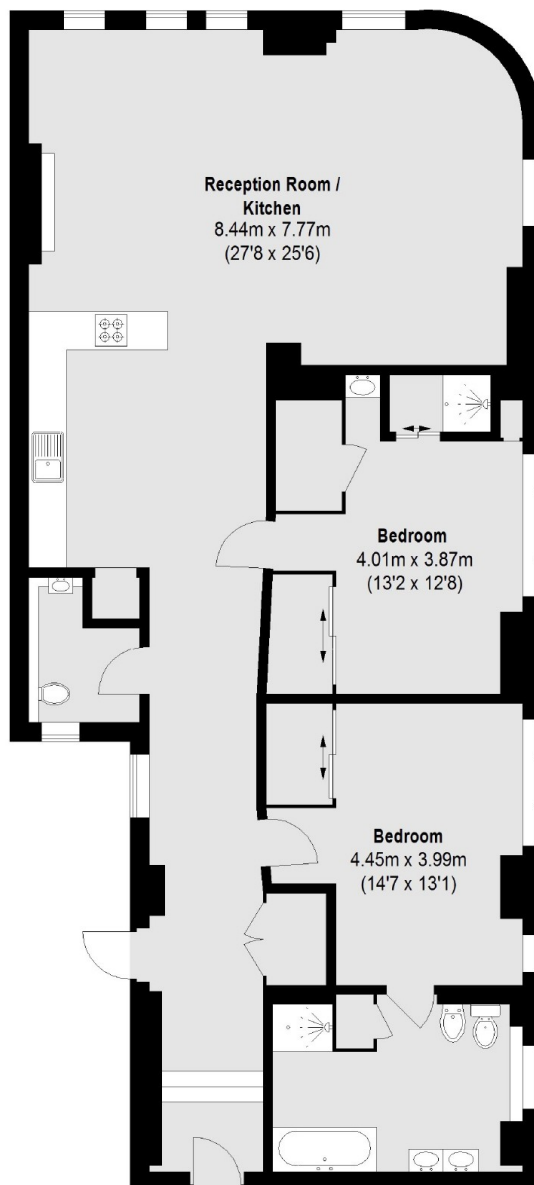
- Two Double Bedrooms
- Two Bathrooms
- Over 1,300sqft
- Porter
- Popular Location
- Modern Finish



Whiteheads Grove, SW3



Whiteheads Grove, London, SW3



Total area (approx.): 126.9 sq. m (1366 Sq. ft)

Dexters

Chelsea and Belgravia
45 Sloane Avenue
London
SW3 3DH
Lettings
020 7590 9500

Energy Rating: D. We aim to make our particulars both accurate and reliable. However they are not guaranteed; nor do they form part of an offer or contract. If you require clarification on any points then please contact us, especially if you're traveling some distance to view. Please note that appliances and heating systems have not been tested and therefore no warranties can be given as to their good working order.

 **RICS** | Regulated
Estate Agent
and Letting Agent

dexters.co.uk