



## Hobury Street, SW10

£750 Per week

A two bedroom apartment based within a period building in the popular Ten Acre Estate in Chelsea. The property has a large reception room, semi open plan kitchen, two bedrooms and a family size bathroom which has been finished to a high standard.

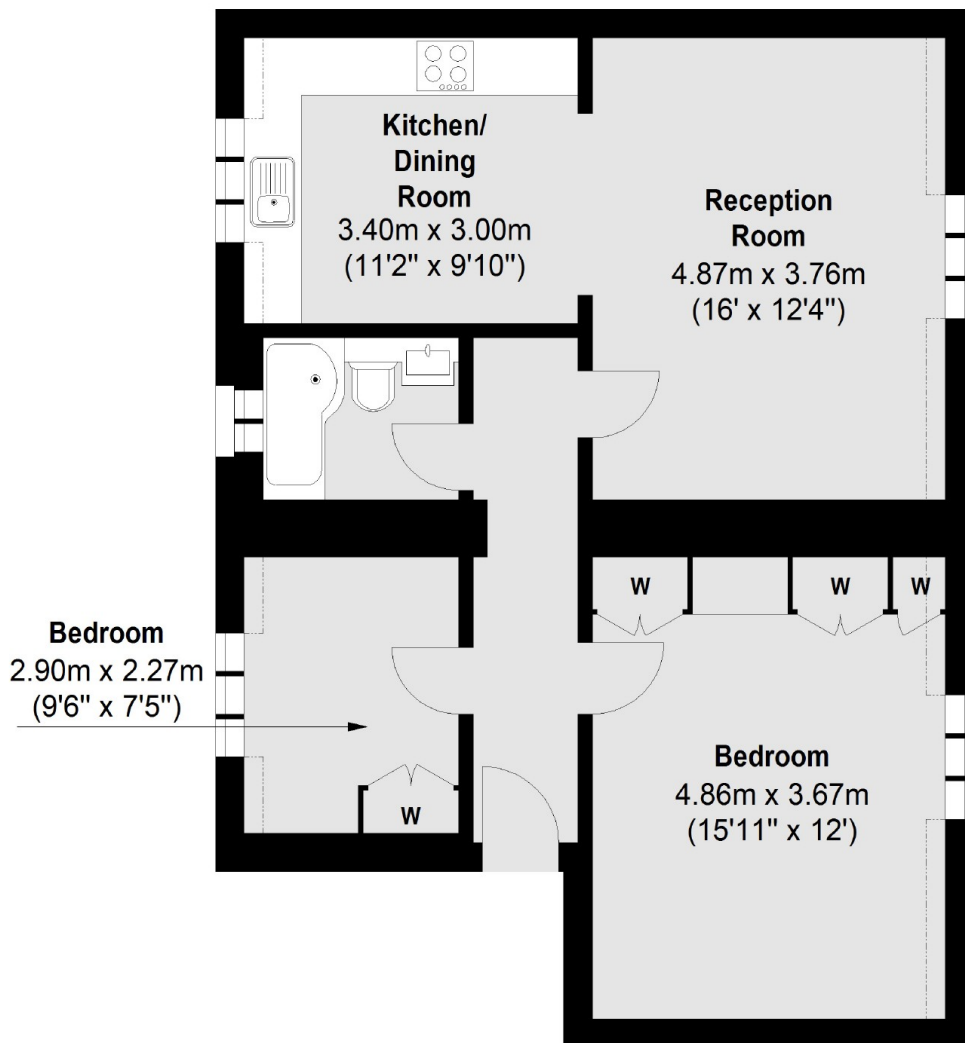
Situated in such an exquisite part of Chelsea within the Ten Acre Estate. The property has very easy access to all local amenities, bars and restaurants making this a very exciting part of London to live in.

### Features

- Two Bedrooms
- Large Reception Room
- Modern Finish
- Third Floor
- Built-in Storage
- Eat-in Kitchen

# Hobury Street, London, SW10

## Third Floor



Internal Area (approx.): 68.3 sq. m (735.2 sq. ft)