



Ebury Bridge Road, SW1W

£550,000

A large one bedroom apartment with a secure parking space. This property has proven to be an excellent rental investment for our client and would also work very well as a London base.

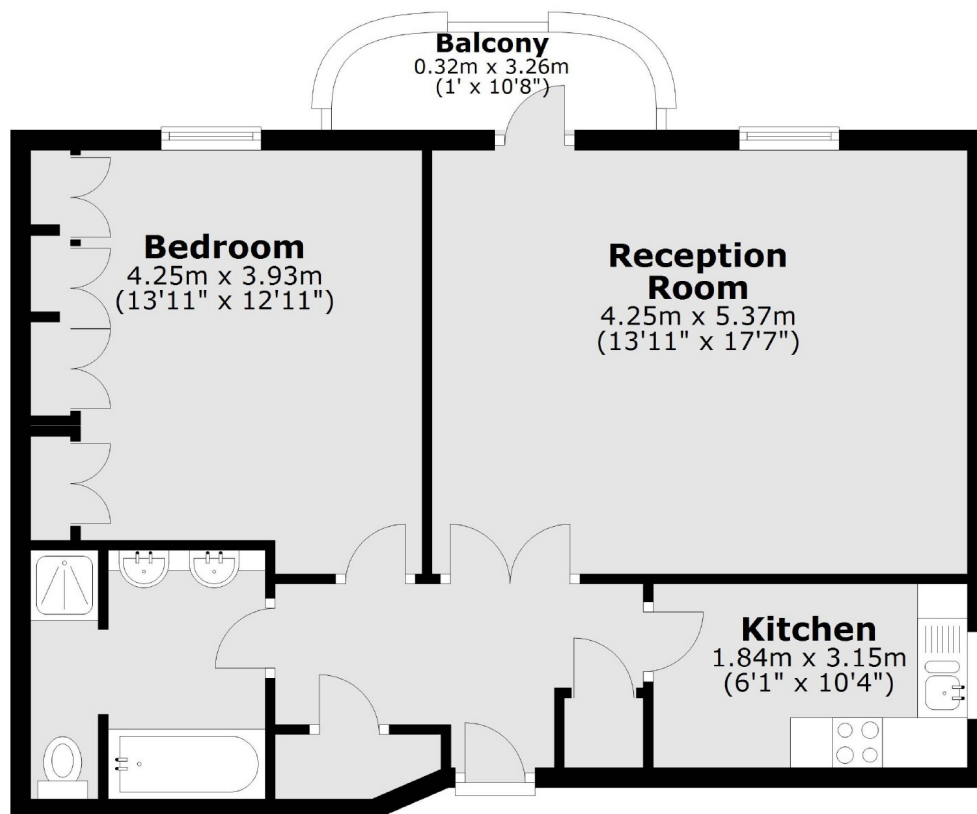
Chelsea Gate Apartments was built in 1996 and only has 73 apartments. The development is has 24 hour portorage, a gym, secure parking and is within easy walking distance of Sloane Square and Battersea Park.

Features

- Leasehold (900+years)
- Balcony
- Lift
- 24 Hour Portorage
- Secure Development
- Gym

**Ebury Bridge Road,
London, SW1W**

Second Floor



Total area: approx. 59.4 sq. metres (639.1 sq. feet)

Dexters

Chelsea and Belgravia
45 Sloane Avenue
London
SW3 3DH
Sales
020 7590 9510

Energy Rating: . We aim to make our particulars both accurate and reliable. However they are not guaranteed; nor do they form part of an offer or contract. If you require clarification on any points then please contact us, especially if you're traveling some distance to view. Please note that appliances and heating systems have not been tested and therefore no warranties can be given as to their good working order.

 **RICS** | Regulated
Estate Agent
and Letting Agent

[dexters.co.uk](https://www.dexters.co.uk)