



Cheyne Court, SW3

£1,846 Per week

A lateral three double bedroom, two bathroom apartment based within a red brick mansion block with on-site porter. The property is south-west facing with views of the River Thames.

Cheyne Court is a portered Victorian mansion block located south of the King's Road close to the green spaces of Burton Court and the Chelsea Physic Garden.

Features

- Three Double Bedrooms
- Two Bathrooms
- River Views
- Eat-in Kitchen
- Hard Wood Floors
- Porter



Cheyne Court, SW3

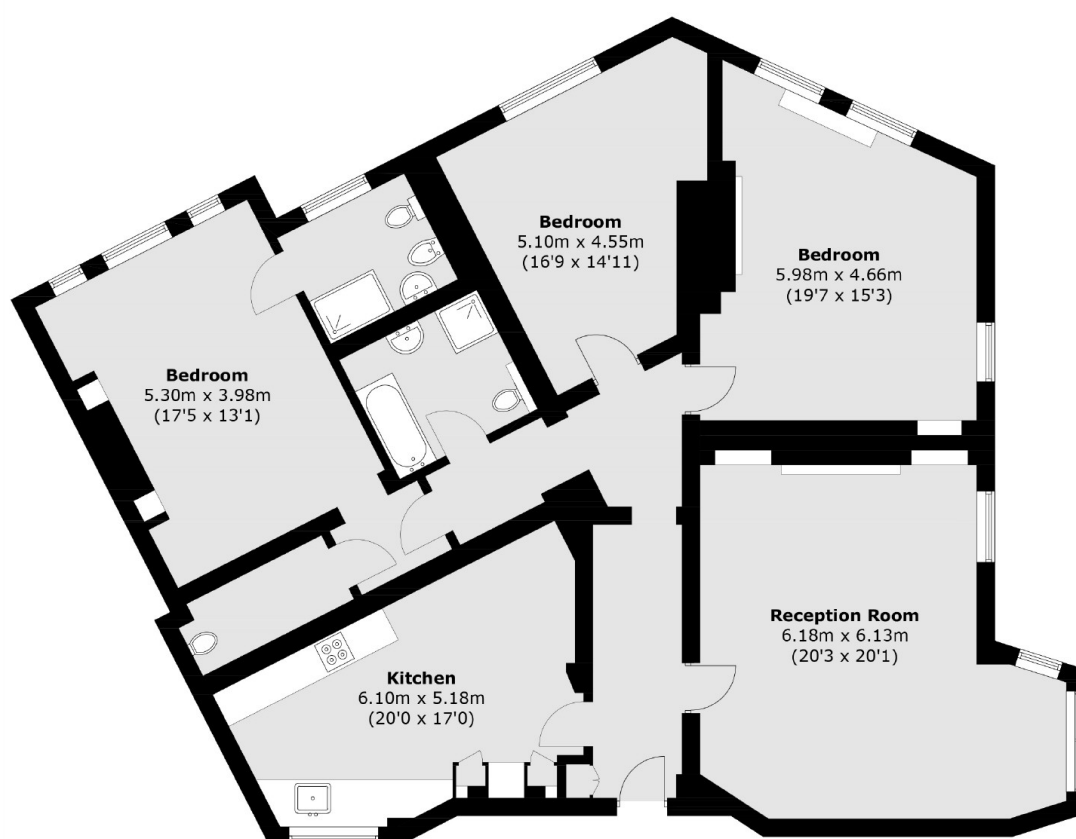
Upon entering the flat you are greeted with a grand hallway that all rooms are located off. The large eat in kitchen is the first room to the left with integrated appliances.

The reception room is opposite with hard wood floors, lovely high ceilings and period features. The reception over looks the river and has space for a large dining table.

The three bedrooms are all good sized doubles, the principal bedroom has an en-suite bathroom and a walk in wardrobe. The two guest bedrooms both have space for additional storage.



Cheyne Court, London, SW3



Total area (approx.): 160.4 sq. m (1,726.5 sq. ft)