



Elm Park Gardens, SW10

£1,250,000

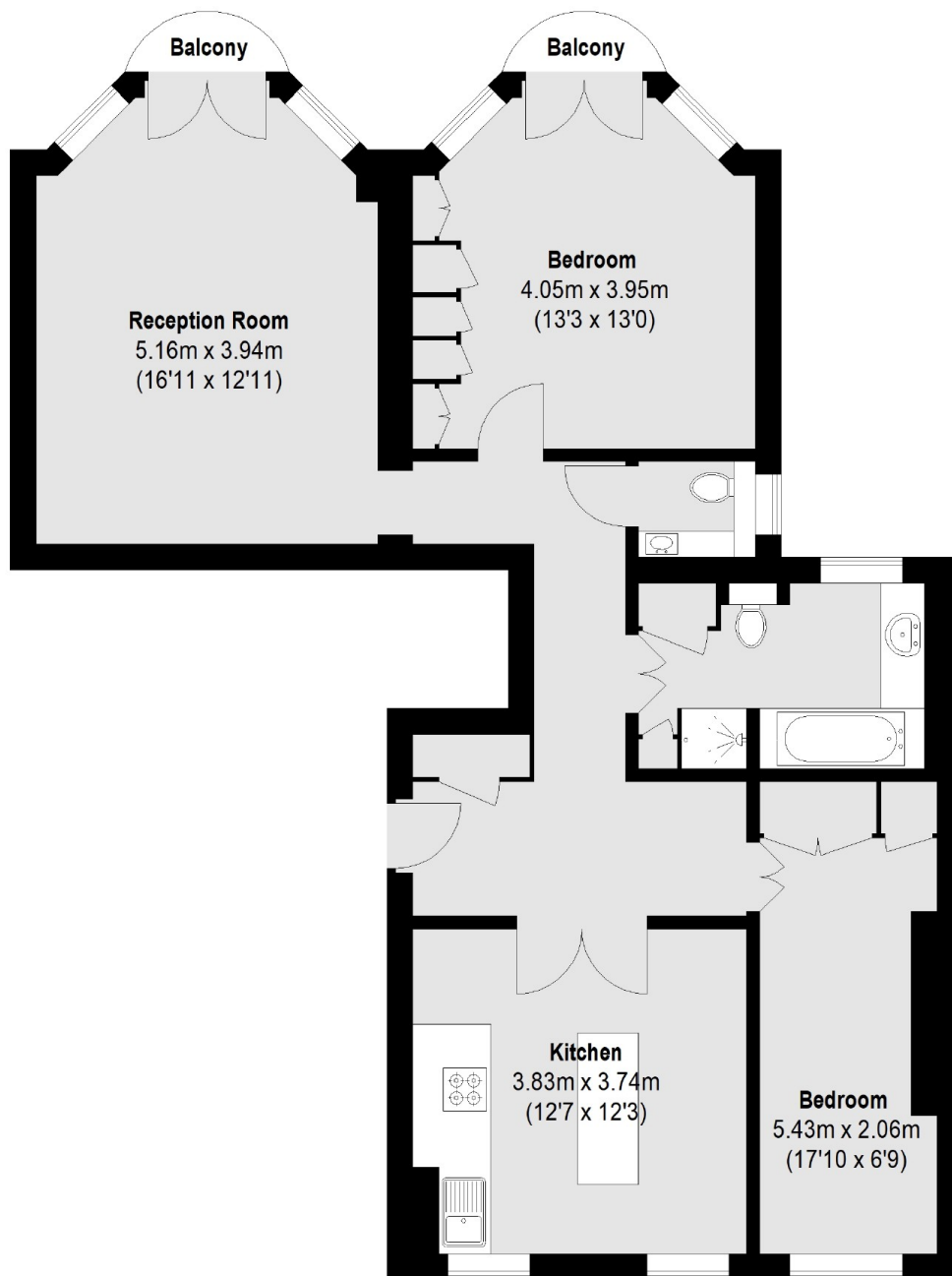
A stunning apartment with a lift to the first floor and access to communal gardens. This property has high ceilings, a long lease and is in good condition throughout.

Elm Park Gardens is ideally situated between the King's Road and Fulham Road. South Kensington, Gloucester Road and Sloane Square tube stations are all within walking distance.

Features

First Floor
High Ceilings
Lift
Communal Gardens
Leasehold (172 years)
Two Balconies

Elm Park Gardens, London, SW10



First Floor

Total area (approx.): 86.20 sq. m (928 Sq. ft)

Balconies: 1.94 sq. m (21 Sq. ft)

Dexters

Chelsea and Belgravia
45 Sloane Avenue
London
SW3 3DH
Sales
020 7590 9510

Energy Rating: . We aim to make our particulars both accurate and reliable. However they are not guaranteed; nor do they form part of an offer or contract. If you require clarification on any points then please contact us, especially if you're traveling some distance to view. Please note that appliances and heating systems have not been tested and therefore no warranties can be given as to their good working order.

 **RICS** | Regulated
Estate Agent
and Letting Agent

[dexters.co.uk](https://www.dexters.co.uk)