



## Edith Grove, SW10

**£600** Per week

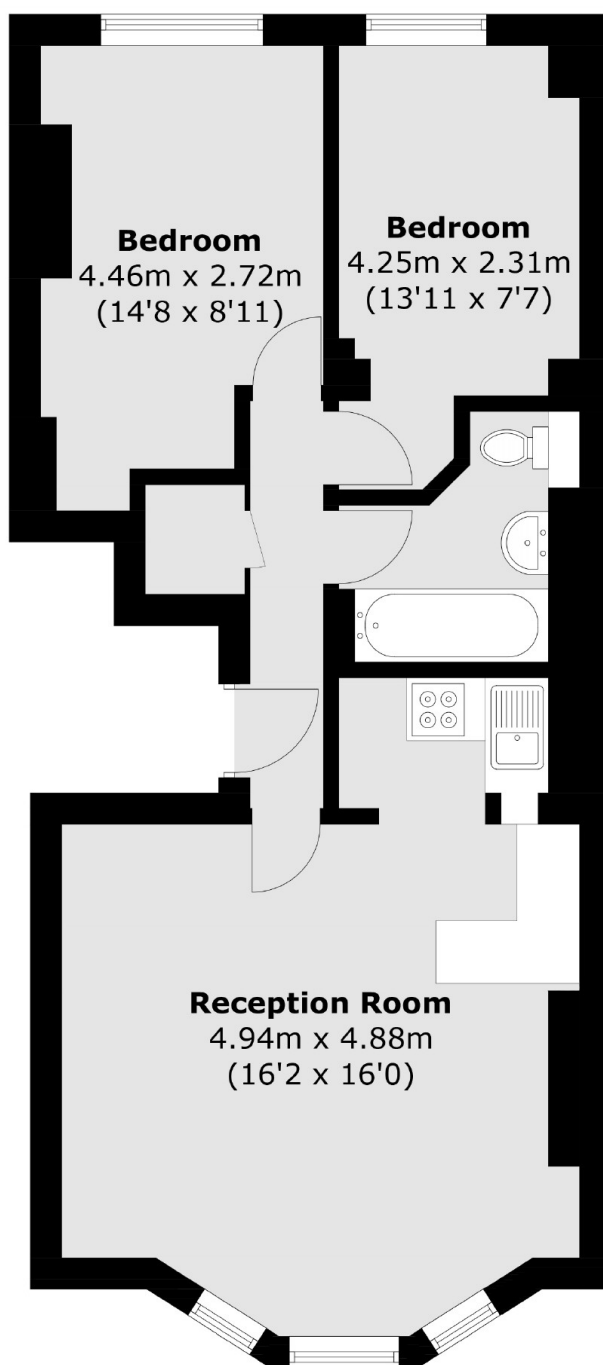
A bright two double bedroom apartment on the raised ground floor on Edith Grove. The property has a semi open plan kitchen and benefits from period features including a fireplace.

Close to a variety of shops on Kings Road. There is a 24 hour Tesco in Earls Court and Sloane Square is within easy reach with an array of cafes and restaurants including The Chelsea Brasserie and The Aural café.

### Features

- Two Double Bedrooms
- One Bathroom
- Period Features
- Raised Ground Floor
- Open Plan Kitchen
- Furnished

# Edith Grove, London, SW10



Total area (approx.): 55.7 sq. m (599.5 sq. ft)

## Dexters

Chelsea and Belgravia  
45 Sloane Avenue  
London  
SW3 3DH  
Lettings  
020 7590 9500

Energy Rating: C. We aim to make our particulars both accurate and reliable. However they are not guaranteed; nor do they form part of an offer or contract. If you require clarification on any points then please contact us, especially if you're traveling some distance to view. Please note that appliances and heating systems have not been tested and therefore no warranties can be given as to their good working order.

 **RICS** | Regulated  
Estate Agent  
and Letting Agent

[dexters.co.uk](https://www.dexters.co.uk)