



Ashburnham Road, SW10

£520,000

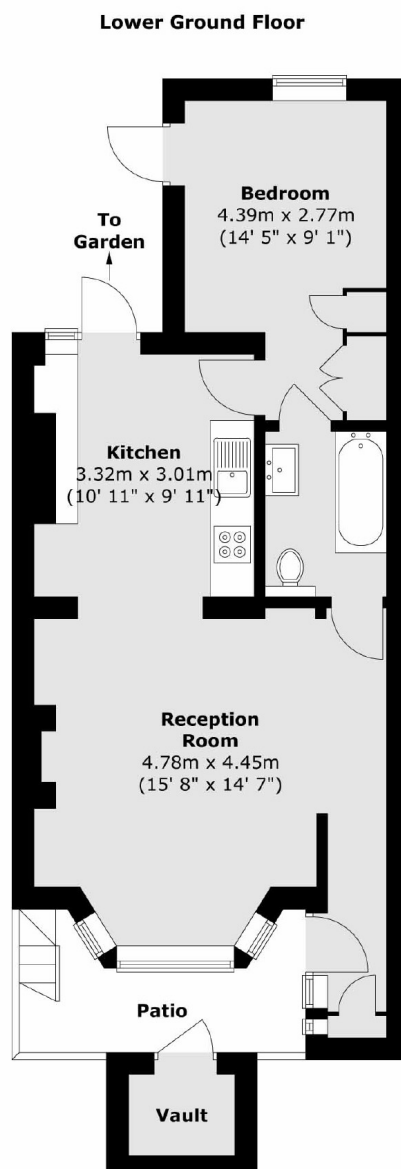
A lovely one bedroom apartment with a private entrance and south facing patio garden. This property has been cleverly re-configured by the current owner and is in great condition throughout.

Ashburnham Road is situated between Chelsea Embankment and the King's Road within 'Lots Village'. An array of shops, transport links, restaurants and cafés are moments away.

Features

- One Bedroom
- Private Entrance
- Leasehold
- Great Condition
- Popular Location
- Patio Garden

Ashburnham Road, London, SW10



Total area (approx.) : 48.1 sq. m (518 sq. ft)
Total vault area (approx.) : 1.8 sq. m (19 sq. ft)
Total patio area (approx.) : 5.2 sq. m (56 sq. ft)