



## Embankment Gardens, SW3

### £1,500,000

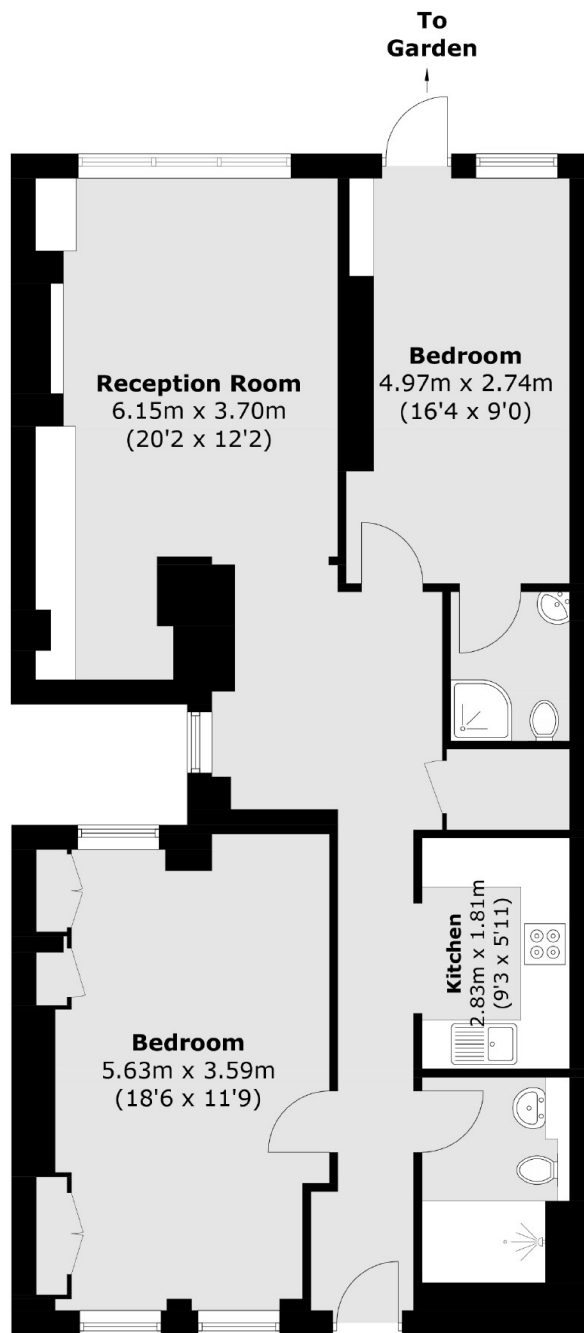
A wonderfully bright apartment with high ceilings, a private garden and a caretaker. This property has been in the same ownership for nearly 20 years and would work perfectly as a long term investment or London home.

Embankment Gardens is a quiet street tucked away from Chelsea Embankment. Duke of York Square, Burton Court, Pavilion Road and local transport links are all within walking distance.

### Features

- On-site Caretaker
- Private Garden
- High Ceilings
- Quiet Location
- Long Leasehold
- Two Double Bedrooms

# Embankment Gardens, London, SW3



## Lower Ground Floor

Total area (approx.): 86.0 sq. m (926.7 sq. ft)

# Dexters

Chelsea and Belgravia  
45 Sloane Avenue  
London  
SW3 3DH  
Sales  
020 7590 9510

Energy Rating: . We aim to make our particulars both accurate and reliable. However they are not guaranteed; nor do they form part of an offer or contract. If you require clarification on any points then please contact us, especially if you're traveling some distance to view. Please note that appliances and heating systems have not been tested and therefore no warranties can be given as to their good working order.

 **RICS** | Regulated  
Estate Agent  
and Letting Agent

[dexters.co.uk](https://www.dexters.co.uk)