



## Moore Street, SW3

£2,307 Per week

A beautiful family home arranged over four floors with four bedrooms, two bathrooms, two reception rooms, a separate utility room and a lovely turfed garden. A perfect property for a family looking to live near to Sloane Square.

Ideally located on one of central Chelsea's most sought after streets. The house is only moments from Sloane Square, the Kings Road and Knightsbridge.

### Features

- Four Bedrooms
- Two Bathrooms
- Two Receptions
- Garden
- Family Home
- Separate Utility Room



## Moore Street, SW3

The house is entered into on the ground floor, off the hallway there is an open plan kitchen dining room. Off the dining room are French doors down to the turfed private garden.

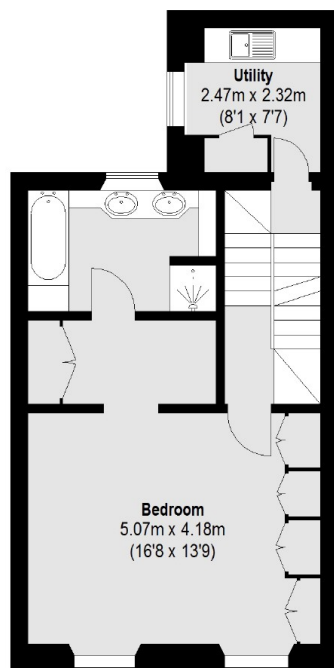
On the first floor is the formal double reception room with wood floors, feature fireplace and lovely detailed cornice. There is space to work from home on the first floor landing.

The second floor is home to the master bedroom suite with large bedroom with built in storage, a walk in wardrobe and en-suite. There is a utility room on this floor. On the third floor are three further bedrooms, a kitchenette and another bathroom.

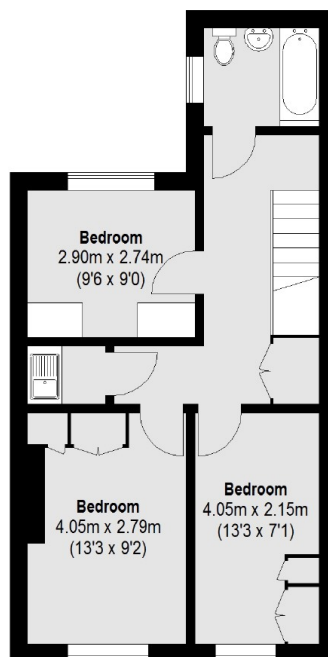




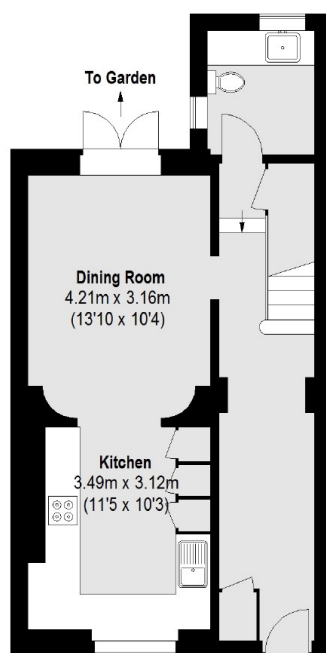
# Moore Street, London, SW3



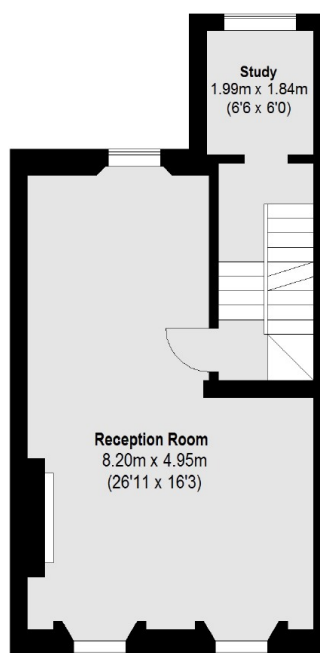
**Second Floor**



**Third Floor**



**Ground Floor**



**First Floor**

Total area (approx.): 182.54 sq. m (1965 sq. ft)

## Dexters

Chelsea and Belgravia  
45 Sloane Avenue  
London  
SW3 3DH  
Lettings  
020 7590 9500

Energy Rating: E. We aim to make our particulars both accurate and reliable. However they are not guaranteed; nor do they form part of an offer or contract. If you require clarification on any points then please contact us, especially if you're traveling some distance to view. Please note that appliances and heating systems have not been tested and therefore no warranties can be given as to their good working order.

**RICS** Regulated  
Estate Agent  
and Letting Agent

dexters.co.uk