



Draycott Place, SW3

£3,450,000

A beautiful apartment with a double reception room, four bedrooms and low service charges. This particular building is located at the favoured end of Draycott Place, moments from Pavilion Road.

Draycott Place runs parallel to the King's Road which is home to plenty of boutique shops and restaurants. Duke of York Square, Burton Court and Pavilion Road are all within walking distance.

Features

- Double Reception Room
- Beautiful Apartment
- Four Bedrooms
- Juliet Balcony
- Popular Location
- Low Service Charges



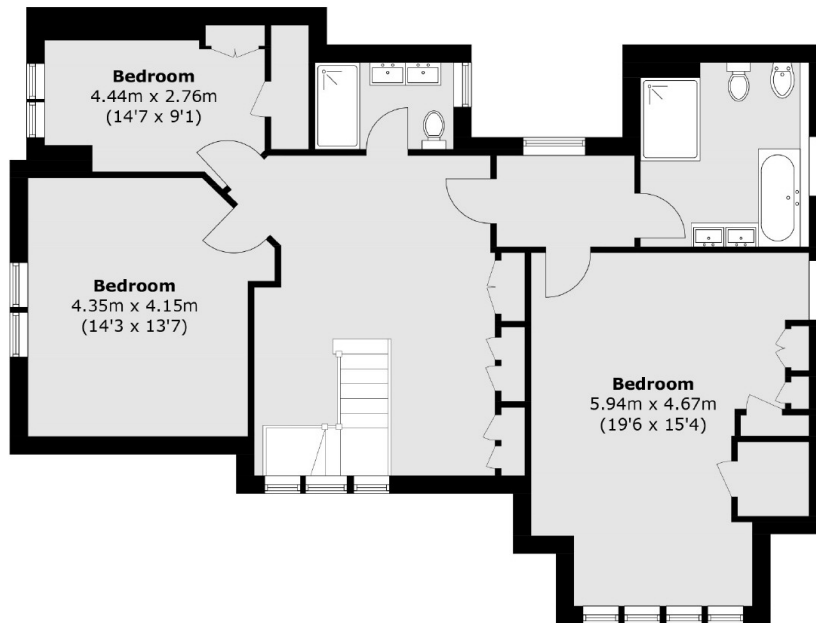
Draycott Place, SW3

As you enter on the second floor of the property you are welcomed by a double reception room filled with light, boasting its own Juliet Balcony. A well-equipped kitchen ideal for family living, a bedroom and stylish bathroom are also located on the same floor.

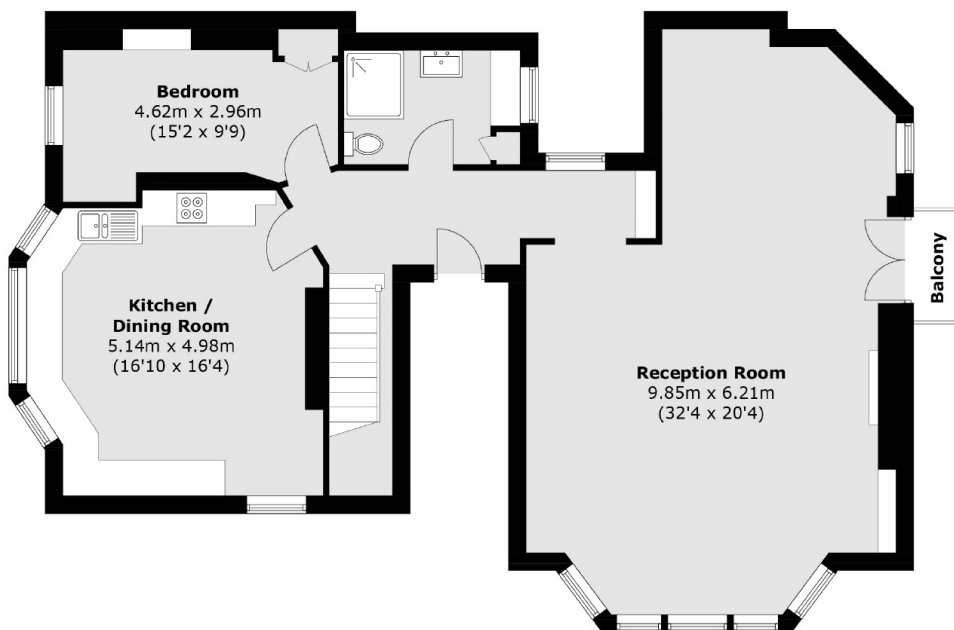
On the top floor are three large bedrooms with plenty of built-in storage and two bathrooms, This duplex apartment is in great condition throughout and has been a wonderful family home for the current owners.



Draycott Place, London, SW3



Third Floor



Second Floor

Total area (approx.): 199.0 sq. m (2,142.0 sq. ft)
Balcony: 1.5 sq. m (16.1 sq. ft)