



Oakley Street, SW3

£650,000

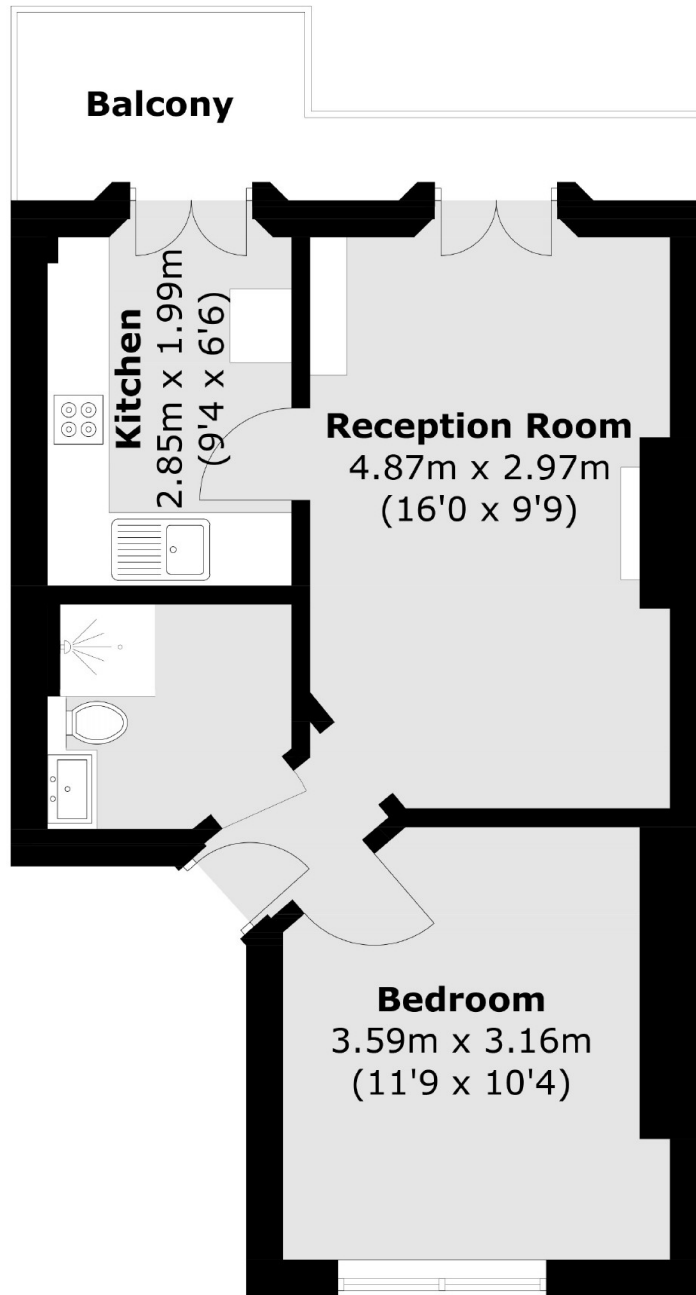
A fantastic apartment ideally positioned on the first floor with its own balcony. This property is flooded with light, is in great condition throughout and would work perfectly as a long term investment.

Oakley Street is located between the King's Road and Chelsea Embankment. Sloane Square tube station and Battersea Park are both within easy reach.

Features

- Grade II Listed
- First Floor
- Balcony
- High Ceilings
- Great Condition
- Ideal Rental Investment

Oakley Street, London, SW3



First Floor

Total area (approx.): 36.8 sq. m (396.1 sq. ft)
Balcony: 5.8 sq. m (62.4 sq. ft)

Dexters

Chelsea and Belgravia
45 Sloane Avenue
London
SW3 3DH
Sales
020 7590 9510

Energy Rating: . We aim to make our particulars both accurate and reliable. However they are not guaranteed; nor do they form part of an offer or contract. If you require clarification on any points then please contact us, especially if you're traveling some distance to view. Please note that appliances and heating systems have not been tested and therefore no warranties can be given as to their good working order.

 **RICS** | Regulated
Estate Agent
and Letting Agent

[dexters.co.uk](https://www.dexters.co.uk)