



## Slaidburn Street, SW10

£461 Per week

A brand newly refurbished one bedroom flat on the first floor of a purpose built block on Slaidburn Street with wood floors throughout, a brand new bathroom and a balcony overlooking the Kings Road.

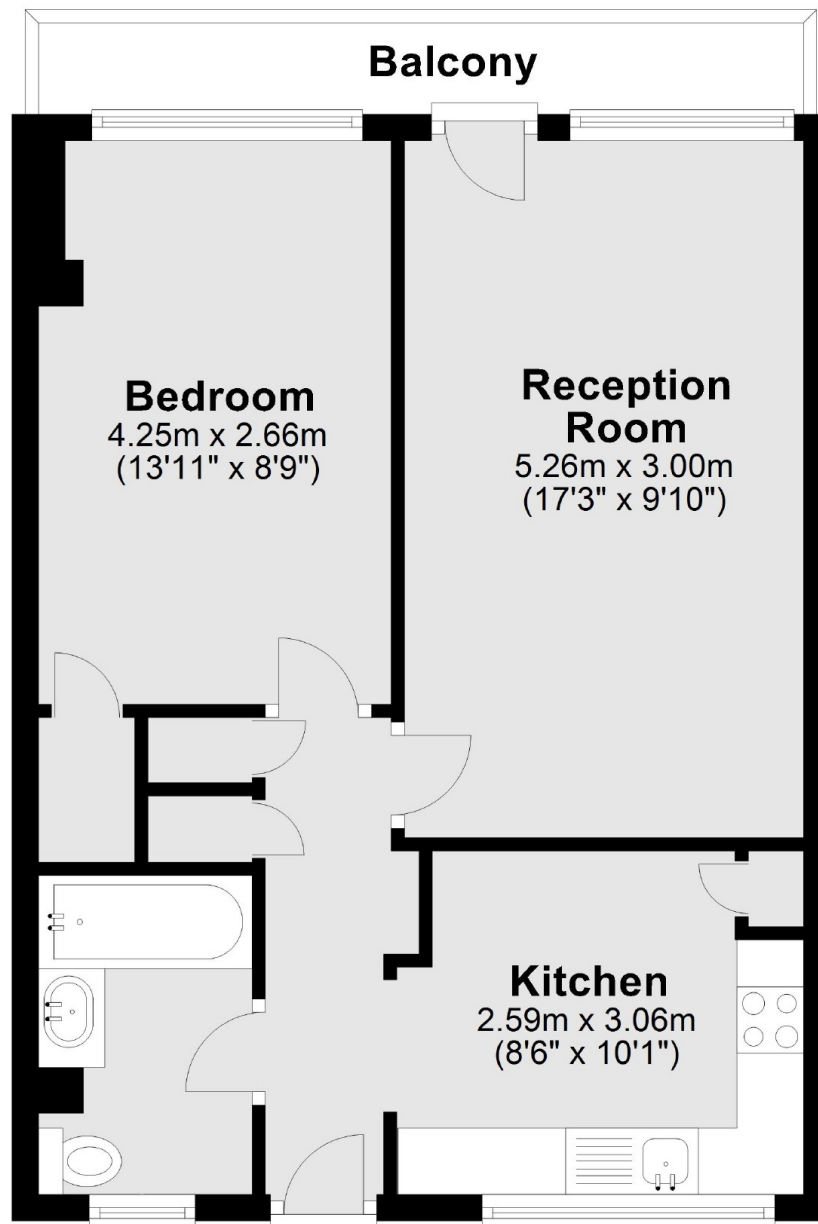
Situated just off the Kings Road, Slaidburn Street is a leafy residential cul-de-sac with an abundance of boutique shops, restaurants and cafés right on its doorstep. Westfield Park and Chelsea Embankment are both moments away as well as the local transport links.

### Features

- One Bedroom
- First Floor
- Newly Refurbished
- Balcony
- Wood Floors
- Built In Storage

**Slaidburn Street,  
London, SW10**

## **First Floor**



**Main area: Approx. 45.9 sq. metres (493.6 sq. feet)**

Plus balconies, approx. 4.5 sq. metres (48.8 sq. feet)

**Dexters**

Chelsea and Belgravia  
45 Sloane Avenue  
London  
SW3 3DH  
Lettings  
020 7590 9500

Energy Rating: D. We aim to make our particulars both accurate and reliable. However they are not guaranteed; nor do they form part of an offer or contract. If you require clarification on any points then please contact us, especially if you're traveling some distance to view. Please note that appliances and heating systems have not been tested and therefore no warranties can be given as to their good working order.

**RICS** | Regulated  
Estate Agent  
and Letting Agent

[dexters.co.uk](http://dexters.co.uk)