



Uverdale Road, SW10

£4,000,000

A stunning family home that has been finished to the highest standard throughout. This house has been remodelled and redesigned by the current owners to create a 'best in class' property.

Uverdale Road is located within the Lots Village Conservation Area in Chelsea. Westfield Park and the King's Road with all the amenities they have to offer are moments away

Features

- Beautifully Designed
- Five Bedrooms
- Terrace & Patio Garden
- Freehold
- Separate Study
- End of Terrace



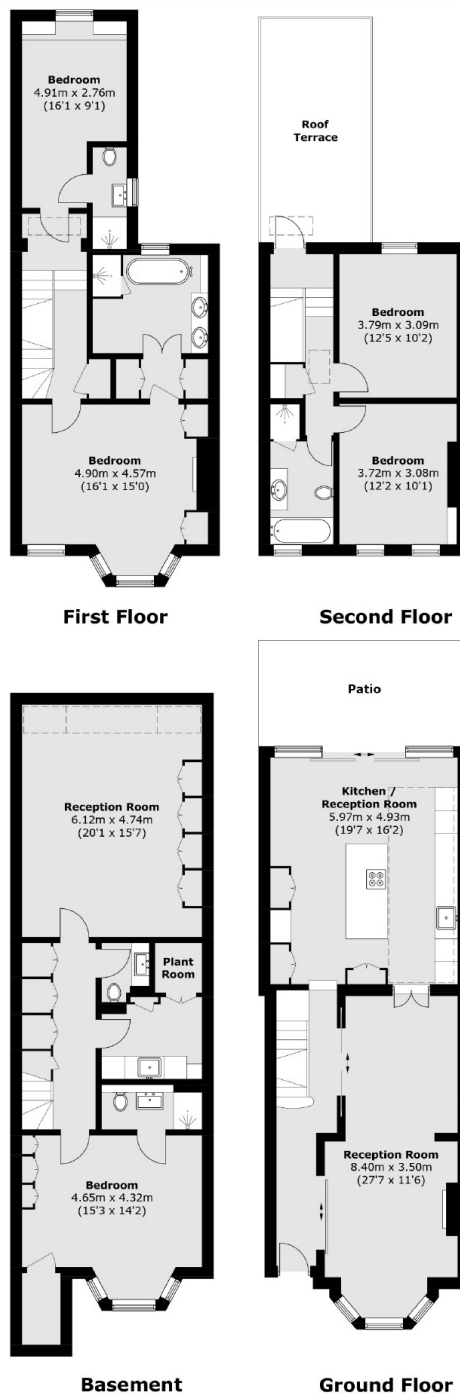
Uverdale Road, SW10

As you enter you are welcomed by a beautiful living room, leading to a bespoke, eat-in kitchen that has been cleverly designed and extended to maximise the natural light. The lower ground floor as high ceilings and boasts an exceptional entertaining area, ideal for family living, a double bedroom with en-suite bathroom and separate utility room.

Positioned on the first floor is a stylish Master Suite with an abundance of storage and a study on the landing that could also be converted into an additional bedroom. At the top of the house is a decked roof terrace that overlooks Westfield Park and two further bedrooms.



Uverdale Road, London, SW10



Total area (approx.): 235.4 sq. m (2,533.9 sq. ft)
 Roof Terrace: 17.0 sq. m (183.0 sq. ft)
 Patio: 15.0 sq. m (161.5 sq. ft)

Dexters

Chelsea and Belgravia
 45 Sloane Avenue
 London
 SW3 3DH
 Sales
 020 7590 9510

Energy Rating: . We aim to make our particulars both accurate and reliable. However they are not guaranteed; nor do they form part of an offer or contract. If you require clarification on any points then please contact us, especially if you're traveling some distance to view. Please note that appliances and heating systems have not been tested and therefore no warranties can be given as to their good working order.

 **RICS** | Regulated
 Estate Agent
 and Letting Agent

[dexters.co.uk](https://www.dexters.co.uk)