



Stadium Street, SW10

£1,195,000

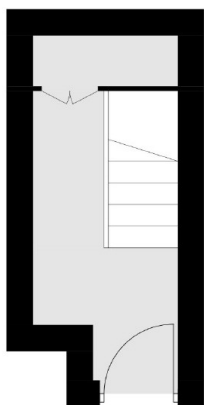
A beautifully refurbished split-level apartment in a handsome Georgian conversion. This property has been finished to a turn-key standard and would make a perfect London home.

Stadium Street is located within the Lots Village Conservation Area in Chelsea. Westfield Park and the King's Road, with all the amenities it has to offer, are moments away.

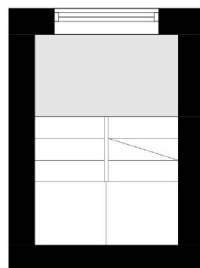
Features

- Excellent Condition
- Three Bedrooms
- Split Level Apartment
- Quiet Location
- Leasehold (100+ years)
- Low Outgoings

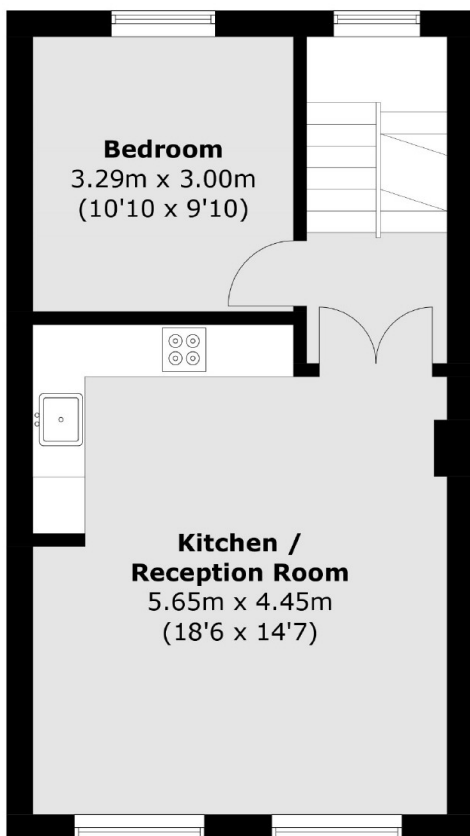
Stadium Street,
London, SW10



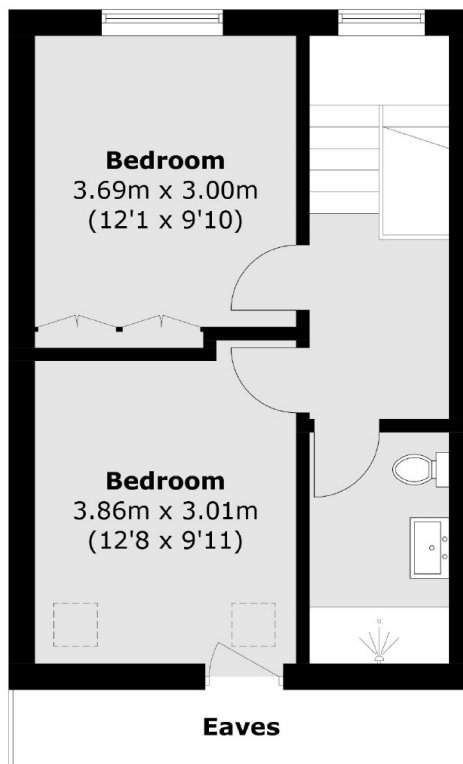
Ground Floor



First Floor



Second Floor



Third Floor

Total area (approx.): 87.8 sq. m (945.0 sq. ft)
(Excluding Eaves)

Dexters

Chelsea and Belgravia
45 Sloane Avenue
London
SW3 3DH
Sales
020 7590 9510

Energy Rating: . We aim to make our particulars both accurate and reliable. However they are not guaranteed; nor do they form part of an offer or contract. If you require clarification on any points then please contact us, especially if you're traveling some distance to view. Please note that appliances and heating systems have not been tested and therefore no warranties can be given as to their good working order.

RICS | Regulated
Estate Agent
and Letting Agent

dexters.co.uk