



## Royal Avenue, SW3

£750,000

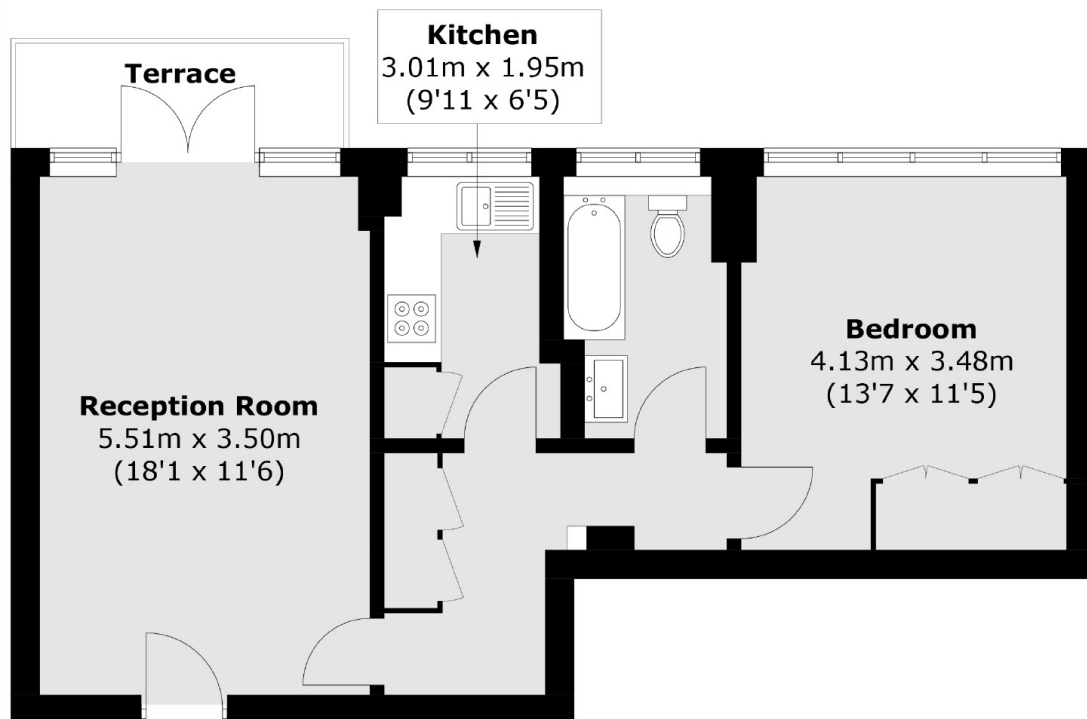
A bright and spacious one bedroom property with a balcony. Located on the third floor of a purpose built block, this apartment would be an excellent London base or rental investment.

Royal Avenue House is located on the King's Road and has the bonus of a live-in caretaker. Pavilion Road, Chelsea Green and Sloane Square are all within walking distance.

### Features

- Lift
- Good Condition
- Long Leasehold
- Balcony
- One Bedroom
- Popular Location

# Royal Avenue, London, SW3



## Third Floor

Total area (approx.): 50.6 sq. m (544.6 sq. ft)  
Terrace: 3.8 sq. m (40.9 sq. ft)

# Dexters

Chelsea and Belgravia  
45 Sloane Avenue  
London  
SW3 3DH  
Sales  
020 7590 9510

Energy Rating: . We aim to make our particulars both accurate and reliable. However they are not guaranteed; nor do they form part of an offer or contract. If you require clarification on any points then please contact us, especially if you're traveling some distance to view. Please note that appliances and heating systems have not been tested and therefore no warranties can be given as to their good working order.

 **RICS** | Regulated  
Estate Agent  
and Letting Agent

[dexters.co.uk](https://www.dexters.co.uk)