



## Cheyne Court, SW3

£2,950,000

A beautiful, quintessential Chelsea apartment located within a portered development. This property has three bedrooms, a wonderful open plan living room ideal for entertaining and benefits from a share of the freehold.

Cheyne Court is a portered Victorian mansion block located south of the King's Road close to the green spaces of Burton Court and the Chelsea Physic Garden. This particular building is located on Flood Street, a pretty tree lined street that runs from the King's Road to Chelsea Embankment.

### Features

- Share of Freehold
- Porterage
- Lift
- Lateral Apartment
- Large Reception Room
- Quiet Location





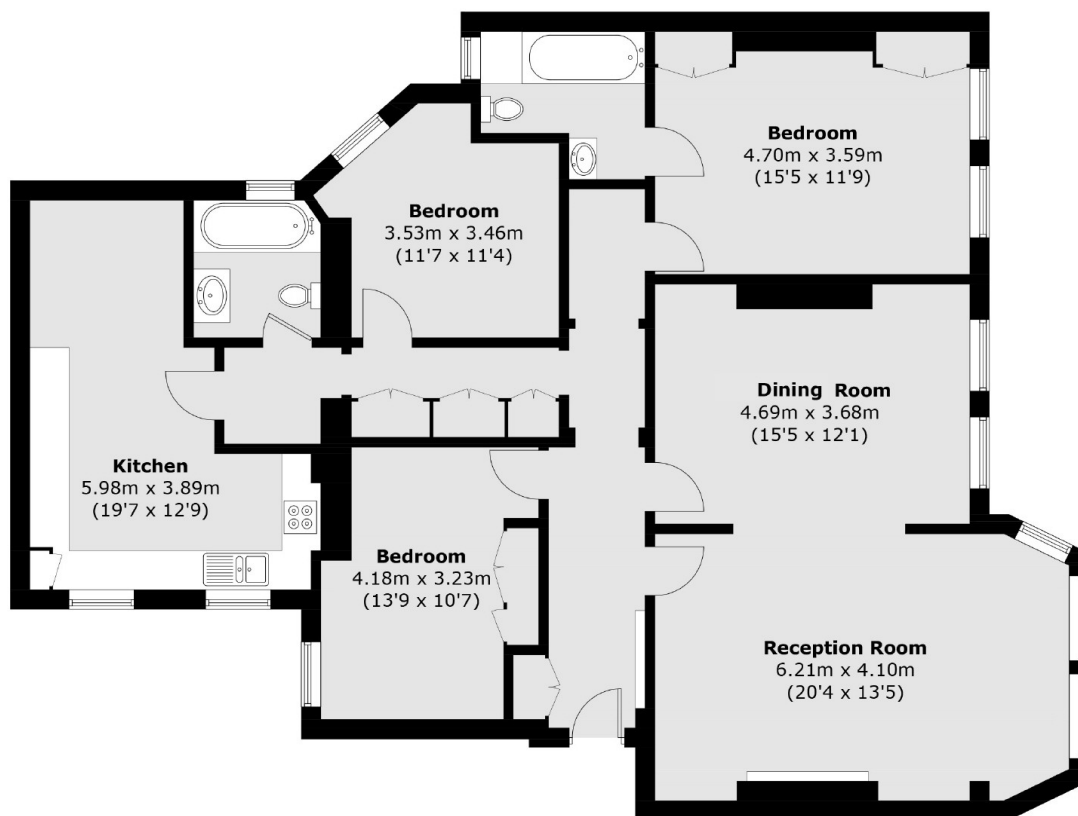
## Cheyne Court, SW3

As you enter this building from Flood Street you are welcomed by smart communal areas that lead to a passenger lift, providing easy access to the apartment on the third floor. From the hallway, there is a large living room that is joined by a dining area which has plenty of character features throughout. In addition to the three bedrooms, one of which is currently used as a study, there are two bathrooms and a large eat-in kitchen which would be ideal for family living.





# Cheyne Court, London, SW3



**Third Floor**

Total area (approx.): 140.2 sq. m (1509.1 sq. ft)