



Elystan Place, SW3

£1,295 Per week

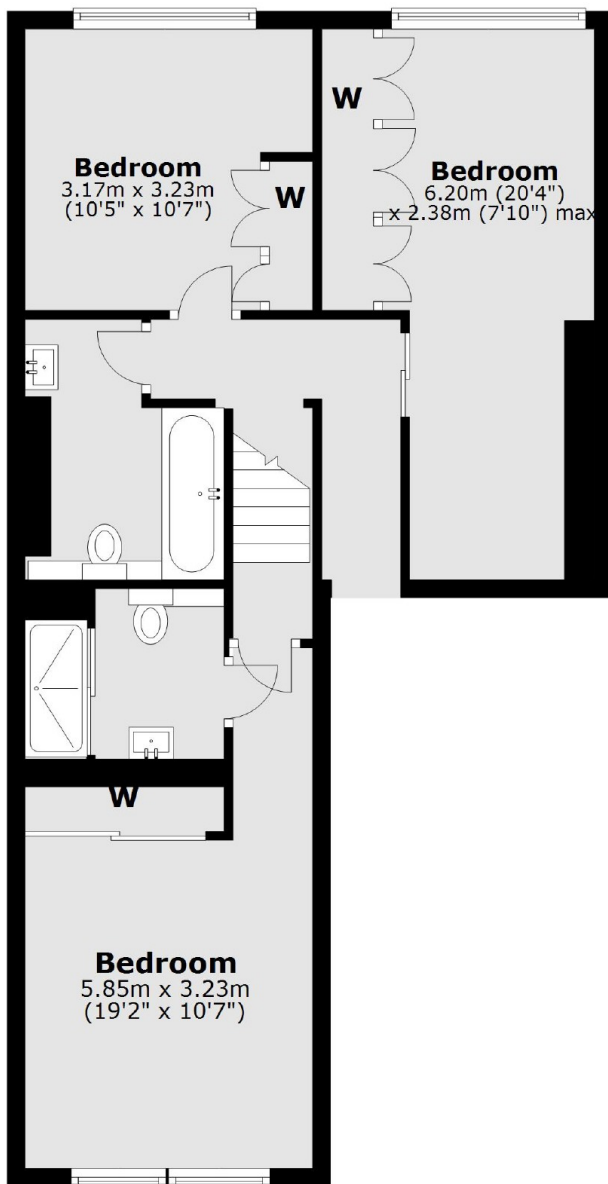
A bright and spacious three double bedroom apartment moments from Chelsea Green. This south facing, split level apartment benefits from plenty of natural light and boasts a very generous reception room.

Ranelagh House is a secure residential building on Elystan Place, north of the King's Road. Sloane Square, South Kensington and Chelsea Green are all within walking distance.

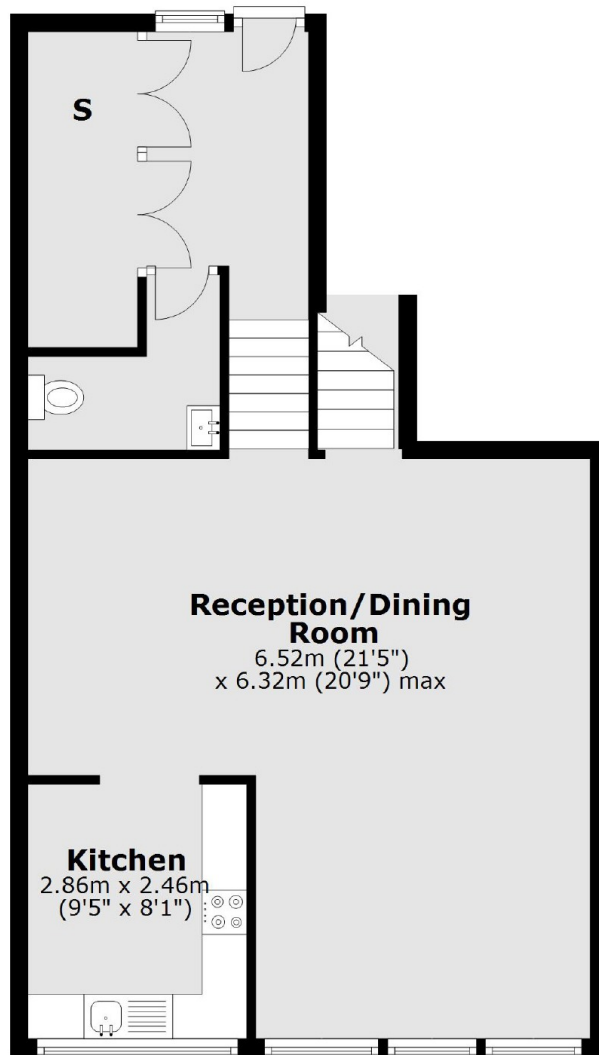
Features

- Three Double Bedrooms
- Two Bathrooms
- Lift
- Porter
- Large Reception Room
- Wood Floors Throughout

Elystan Place, London, SW3



Second Floor



Third Floor

Total area: approx. 119.1 sq. metres (1282.0 sq. feet)