



## Tetcott Road, SW10

£1,038 Per week

A large upper maisonette with plenty of natural light. This wonderful property offers three bedrooms, two large bathrooms and has been fantastically finished throughout.

Tetcott Road is tucked away from the hustle and bustle of the Kings Road and Chelsea Embankment. An array of shops, transport links, restaurants and cafés are moments away.

### Features

- Three Bedrooms
- Two Bathrooms
- Fantastic Condition
- Natural Light
- Upper Maisonette
- Lots Village



## Tetcott Road, SW10

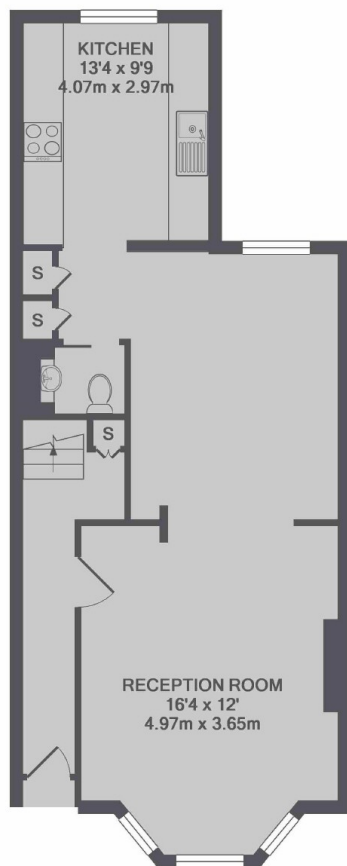
Entered through a private entrance the hallway leads to the double reception room encompassing the living room and dining room. The family size kitchen is found at the rear of the property and offers all appliances required.

The second and third bedroom is found on the first floor of the property, with built in storage and family bathroom. The master bedroom is found on the top floor of the property with large en suite bathroom.

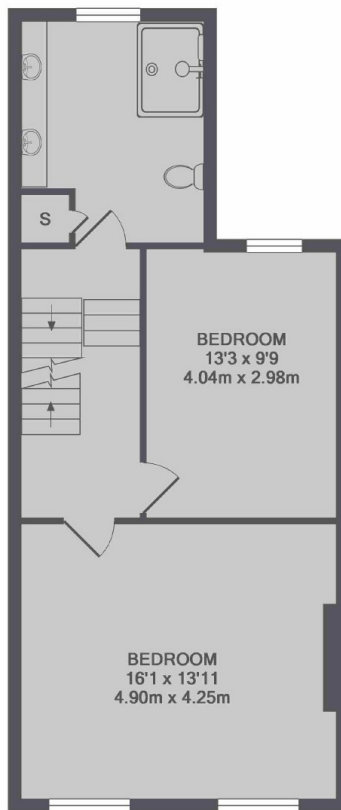




# Tetcott Road, London, SW10



GROUND FLOOR



1ST FLOOR



2ND FLOOR

TOTAL APPROX. FLOOR AREA 1559 SQ.FT. (144.8 SQ.M.)

## Dexters

Chelsea and Belgravia  
45 Sloane Avenue  
London  
SW3 3DH  
Lettings  
020 7590 9500

Energy Rating: C. We aim to make our particulars both accurate and reliable. However they are not guaranteed; nor do they form part of an offer or contract. If you require clarification on any points then please contact us, especially if you're traveling some distance to view. Please note that appliances and heating systems have not been tested and therefore no warranties can be given as to their good working order.



[dexters.co.uk](https://www.dexters.co.uk)