



Burton Mews, SW1W

£3,000 Per week

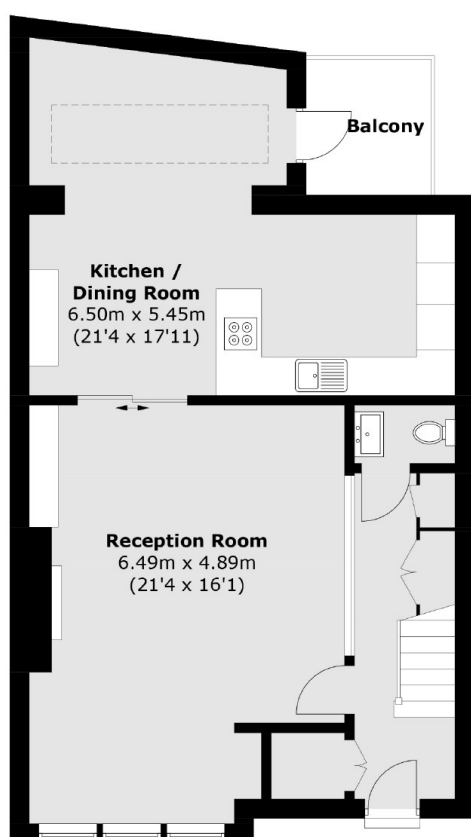
A beautiful mews house within the sought-after Burton Mews, Belgravia. Based over three floors, this property benefits from three double bedrooms (all with en-suites) and an extra study room.

Burton Mews is ideally located in the heart of Belgravia within easy walking distance to Elizabeth Street, Sloane Square and Victoria.

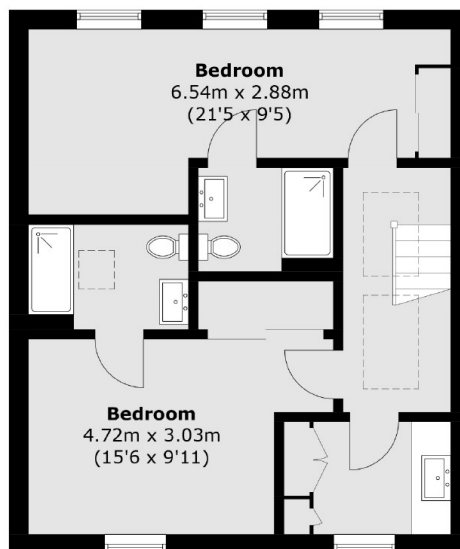
Features

- Mews House
- Three Double Bedrooms
- Three En-suites
- Extra Study Room
- Large Kitchen/Dinning Room
- On-street Parking

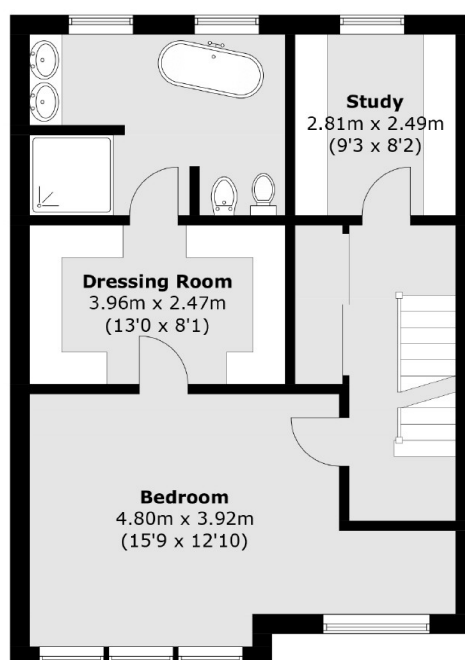
Burton Mews, London, SW1W



Ground Floor



Second Floor



First Floor

Total area (approx.): 183.7 sq. m (1,977.4 sq. ft)
Balcony area : 4.1 sq. m (44.1 sq. ft)