



First Street, SW3

£1,900 Per week

This charming four bedroom period family house is arranged over four floors and has been finished to a high standard, offers great light and spacious accommodation throughout.

Located in the heart of the Chelsea, First Street is ideally located for the boutiques and restaurants available over Walton Street while Knightsbridge, Harrods & Sloane Square station are a short walk away.

Features

- Four Bedrooms
- Three Bathrooms
- Open Plan Kitchen & Breakfast Room
- Double Reception
- Courtyard Garden & Balcony



First Street, SW3

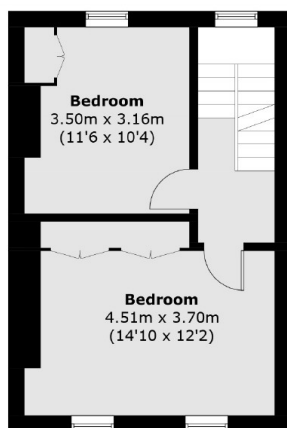
The raised ground floor entrance of the house leads you to a beautifully open double reception room with wooden floors and high ceilings. There is also a family bathroom on this level.

Heading down to the lower ground floor is a contemporary open plan kitchen and breakfast room with double doors leading out onto the courtyard garden. You will also find a double bedroom and en suite bathroom on this level.

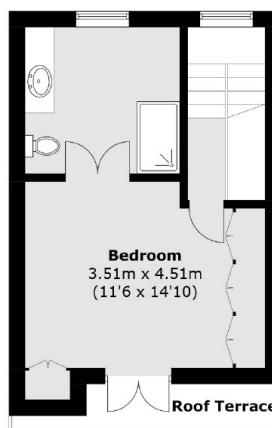
On the first floor of the house are two further double bedrooms with ample built in storage. Heading up to the third floor you will find the spacious master suite with fitted wardrobes, en suite bathroom and access to the balcony. The house offers an excellent mix of modern and period features.



First Street, London, SW3



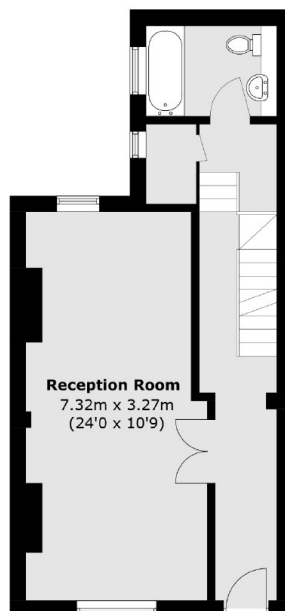
First Floor



Second Floor



Lower Ground Floor



Raised Ground Floor

Total area (approx.): 154.6 sq. m (1,664.2 sq. ft)
Roof Terrace area : 3.4 sq. m (36.5 sq. ft)