



Whiteheads Grove, SW3

£500,000

A one bedroom apartment ideally located within a portered development. This property is now in need of complete refurbishment although once finished to a high standard, would be an ideal investment.

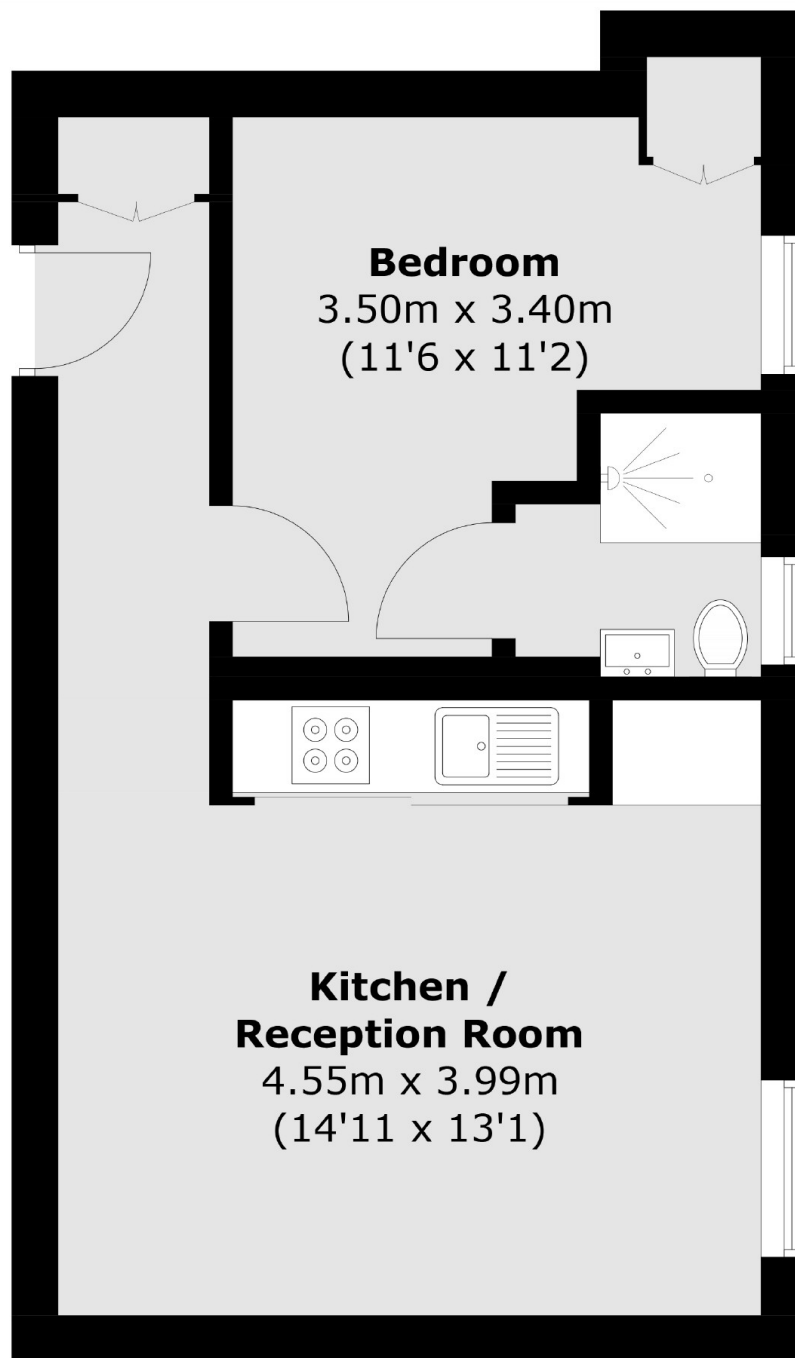
Cranmer Court is located in the heart of Chelsea, within easy reach of South Kensington and Sloane Square underground stations, as well as only moments away from the King's Road offering an excellent variety of shops, bars and restaurants.

Features

First Floor
Portered
One Bedroom

Unmodernised
Lift

Whiteheads Grove, London, SW3



Total area (approx.): 35.8 sq. m (385.3 sq. ft)

Dexters

Chelsea and Belgravia
45 Sloane Avenue
London
SW3 3DH
Sales
020 7590 9510

Energy Rating: . We aim to make our particulars both accurate and reliable. However they are not guaranteed; nor do they form part of an offer or contract. If you require clarification on any points then please contact us, especially if you're traveling some distance to view. Please note that appliances and heating systems have not been tested and therefore no warranties can be given as to their good working order.

 **RICS** | Regulated
Estate Agent
and Letting Agent

[dexters.co.uk](https://www.dexters.co.uk)