



Walton Street, SW3

£550,000

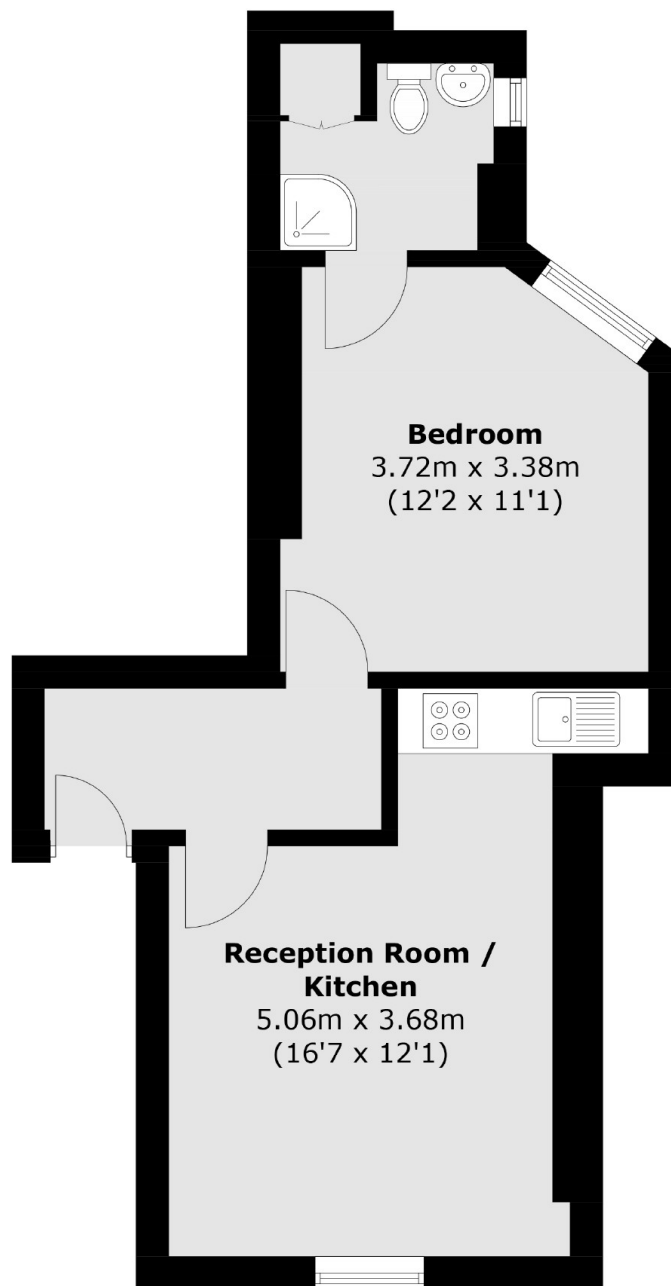
A one bedroom apartment filled with natural light located within a gated development. This property is in good condition and would be an ideal long term investment or London base.

The Marlborough is a sought after, gated development on the border of Chelsea and Knightsbridge, ideally located for all that the local area has to offer.

Features

- Porter
- Gated Development
- One Bedroom
- Ideal London Base
- Popular Location
- Good Condition

Walton Street, London, SW3



Fourth Floor

Total area (approx.): 37.5 sq. m (403.6 sq. ft)

Dexters

Chelsea and Belgravia
45 Sloane Avenue
London
SW3 3DH
Sales
020 7590 9510

Energy Rating: . We aim to make our particulars both accurate and reliable. However they are not guaranteed; nor do they form part of an offer or contract. If you require clarification on any points then please contact us, especially if you're traveling some distance to view. Please note that appliances and heating systems have not been tested and therefore no warranties can be given as to their good working order.

 **RICS** | Regulated
Estate Agent
and Letting Agent

[dexters.co.uk](https://www.dexters.co.uk)